

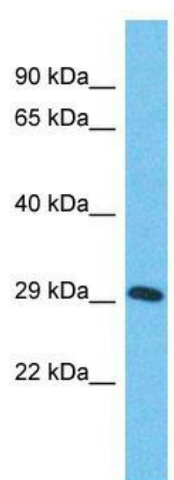
## Product datasheet for **TA339746**

### ZNF625 Rabbit Polyclonal Antibody

#### Product data:

Product Type:	Primary Antibodies
Applications:	WB
Recommended Dilution:	WB
Reactivity:	Human
Host:	Rabbit
Isotype:	IgG
Clonality:	Polyclonal
Immunogen:	The immunogen for Anti-ZNF625 antibody is: synthetic peptide directed towards the middle region of Human ZNF625. Synthetic peptide located within the following region: VGHASLNRHHRADTGHKPYEYQEYGQPKYCKTYCKKAFSDLPYFRTHEWA
Formulation:	Liquid. Purified antibody supplied in 1x PBS buffer with 0.09% (w/v) sodium azide and 2% sucrose.
Concentration:	lot specific
Purification:	Affinity Purified
Conjugation:	Unconjugated
Storage:	Store at -20°C as received.
Stability:	Stable for 12 months from date of receipt.
Predicted Protein Size:	33 kDa
Gene Name:	zinc finger protein 625
Database Link:	<a href="#">NP_660276</a> <a href="#">Entrez Gene 90589 Human</a> <a href="#">Q96I27</a>
Background:	ZNF625 may be involved in transcriptional regulation.
Synonyms:	zinc finger protein 625
Note:	Immunogen Sequence Homology: Human: 100%; Horse: 85%


[View online »](#)

**Product images:**


Host: Rabbit; Target Name: ZNF625; Sample  
Tissue: Stomach Tumor lysates; Antibody  
Dilution: 1.0 ug/ml