

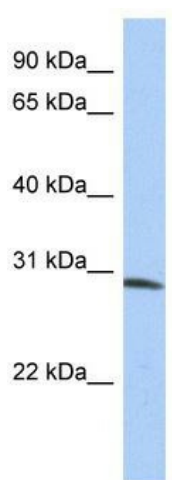
Product datasheet for **TA339745**

ZFYVE28 Rabbit Polyclonal Antibody

Product data:

Product Type:	Primary Antibodies
Applications:	WB
Recommended Dilution:	WB
Reactivity:	Human
Host:	Rabbit
Isotype:	IgG
Clonality:	Polyclonal
Immunogen:	The immunogen for anti-ZFYVE28 antibody: synthetic peptide directed towards the N terminal of human ZFYVE28. Synthetic peptide located within the following region: LTRSLEDVRGALRDQALRDLNTYTEKMRREALRHFDVLF AEFELSYVSAMV
Formulation:	Liquid. Purified antibody supplied in 1x PBS buffer with 0.09% (w/v) sodium azide and 2% sucrose.
Concentration:	lot specific
Purification:	Affinity Purified
Conjugation:	Unconjugated
Storage:	Store at -20°C as received.
Stability:	Stable for 12 months from date of receipt.
Predicted Protein Size:	31 kDa
Gene Name:	zinc finger FYVE-type containing 28
Database Link:	NP_001166127 Entrez Gene 57732 Human Q9HCC9
Background:	ZFYVE28 contains 1 FYVE-type zinc finger. The exact function of ZFYVE28 remains unknown.
Synonyms:	LST2; LYST2
Note:	Immunogen Sequence Homology: Dog: 100%; Pig: 100%; Rat: 100%; Human: 100%; Mouse: 100%; Bovine: 100%; Rabbit: 93%; Guinea pig: 93%; Zebrafish: 92%


[View online »](#)

Product images:

WB Suggested Anti-ZFYVE28 Antibody Titration:
0.2-1 ug/ml; Positive Control: Human Placenta