

## Product datasheet for **TA339744**

### **METTL14 Rabbit Polyclonal Antibody**

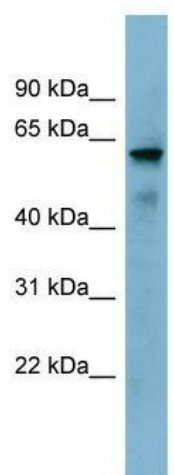
#### **Product data:**

Product Type:	Primary Antibodies
Applications:	WB
Recommended Dilution:	WB
Reactivity:	Human
Host:	Rabbit
Isotype:	IgG
Clonality:	Polyclonal
Immunogen:	The immunogen for anti-KIAA1627 antibody: synthetic peptide directed towards the N terminal of human KIAA1627. Synthetic peptide located within the following region: LNSKDEQREIAETRETCRASYSAPNAKRKYLDEGETDEDKMEEYKDEL
Formulation:	Liquid. Purified antibody supplied in 1x PBS buffer with 0.09% (w/v) sodium azide and 2% sucrose. <i>Note that this product is shipped as lyophilized powder to China customers.</i>
Concentration:	lot specific
Purification:	Affinity Purified
Conjugation:	Unconjugated
Storage:	Store at -20°C as received.
Stability:	Stable for 12 months from date of receipt.
Predicted Protein Size:	52 kDa
Gene Name:	methyltransferase like 14
Database Link:	<a href="#">NP_066012</a> <a href="#">Entrez Gene 57721 Human</a> <a href="#">Q9HCE5</a>
Background:	KIAA1627 is a probable methyltransferase.
Synonyms:	KIAA1627
Note:	Immunogen Sequence Homology: Dog: 100%; Pig: 100%; Rat: 100%; Horse: 100%; Human: 100%; Mouse: 100%; Bovine: 100%; Rabbit: 100%; Zebrafish: 86%



[View online »](#)

## Product images:



WB Suggested Anti-METTL14 Antibody Titration:  
0.2-1 ug/ml; ELISA Titer: 1: 1562500; Positive  
Control: NCI-H226 cell lysate