

Product datasheet for **TA339743**

ZFP14 Rabbit Polyclonal Antibody

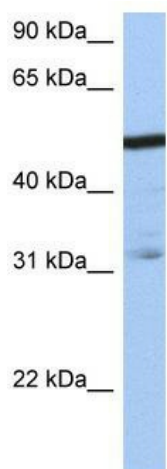
Product data:

Product Type:	Primary Antibodies
Applications:	WB
Recommended Dilution:	WB
Reactivity:	Human
Host:	Rabbit
Isotype:	IgG
Clonality:	Polyclonal
Immunogen:	The immunogen for anti-ZFP14 antibody: synthetic peptide directed towards the N terminal of human ZFP14. Synthetic peptide located within the following region: KSYSLQGSIFRNDWECKSKIIEGEGEKEQEGYFGQVKITSEKMTTYKRHNFL
Formulation:	Liquid. Purified antibody supplied in 1x PBS buffer with 0.09% (w/v) sodium azide and 2% sucrose.
Concentration:	lot specific
Purification:	Affinity Purified
Conjugation:	Unconjugated
Storage:	Store at -20°C as received.
Stability:	Stable for 12 months from date of receipt.
Predicted Protein Size:	63 kDa
Gene Name:	ZFP14 zinc finger protein
Database Link:	NP_065968 Entrez Gene 57677 Human Q9HCL3
Background:	ZFP14 belongs to the krueppel C2H2-type zinc-finger protein family. It contains 13 C2H2-type zinc fingers and 1 KRAB domain. ZFP14 may be involved in transcriptional regulation.
Synonyms:	ZNF531
Note:	Immunogen Sequence Homology: Human: 100%; Horse: 86%; Dog: 79%; Rat: 79%



[View online »](#)

Product images:



WB Suggested Anti-ZFP14 Antibody Titration: 0.2-1 ug/ml; Positive Control: Jurkat cell lysate