

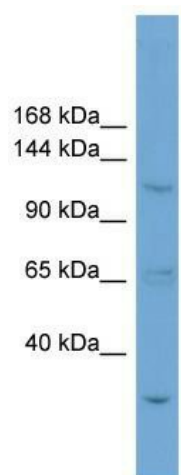
## Product datasheet for TA339741

### ZNF624 Rabbit Polyclonal Antibody

#### Product data:

Product Type:	Primary Antibodies
Applications:	WB
Recommended Dilution:	WB
Reactivity:	Human
Host:	Rabbit
Isotype:	IgG
Clonality:	Polyclonal
Immunogen:	The immunogen for anti-ZNF624 antibody: synthetic peptide directed towards the N terminal of human ZNF624. Synthetic peptide located within the following region: MSLQDSTLSREGKPEGEIMAAVFFSVGRLSPEVTQPDEDLHLQAEETQLV
Formulation:	Liquid. Purified antibody supplied in 1x PBS buffer with 0.09% (w/v) sodium azide and 2% sucrose.
Concentration:	lot specific
Purification:	Affinity Purified
Conjugation:	Unconjugated
Storage:	Store at -20°C as received.
Stability:	Stable for 12 months from date of receipt.
Predicted Protein Size:	100 kDa
Gene Name:	zinc finger protein 624
Database Link:	<a href="#">NP_065838</a> <a href="#">Entrez Gene 57547 Human</a> <a href="#">Q9P2J8</a>
Background:	ZNF624 may be involved in transcriptional regulation.
Synonyms:	KIAA1349; MGC119602; MGC119603; MGC119605
Note:	Immunogen Sequence Homology: Human: 100%


[View online »](#)

**Product images:**


WB Suggested Anti-ZNF624 Antibody Titration:  
0.2-1 ug/ml; ELISA Titer: 1: 1562500; Positive  
Control: HepG2 cell lysate