

Product datasheet for **TA339735**

XAB2 Rabbit Polyclonal Antibody

Product data:

Product Type:	Primary Antibodies
Applications:	WB
Recommended Dilution:	WB
Reactivity:	Human
Host:	Rabbit
Isotype:	IgG
Clonality:	Polyclonal
Immunogen:	The immunogen for anti-XAB2 antibody: synthetic peptide directed towards the N terminal of human XAB2. Synthetic peptide located within the following region: VKCWLRYIEFKQGAPKPRLNQLYERALKLLPCSYKLWYRYLKARRAQVKH
Formulation:	Liquid. Purified antibody supplied in 1x PBS buffer with 0.09% (w/v) sodium azide and 2% sucrose. <i>Note that this product is shipped as lyophilized powder to China customers.</i>
Concentration:	lot specific
Purification:	Affinity Purified
Conjugation:	Unconjugated
Storage:	Store at -20°C as received.
Stability:	Stable for 12 months from date of receipt.
Predicted Protein Size:	100 kDa
Gene Name:	XPA binding protein 2
Database Link:	NP_064581 Entrez Gene 56949 Human Q9HCS7
Background:	XAB2 belongs to the crooked-neck family. It contains 14 HAT repeats. XAB2 is involved in transcription-coupled repair (TCR), transcription and pre-mRNA splicing.
Synonyms:	HCNP; HCRN; NTC90; SYF1



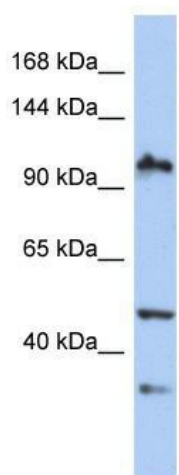
[View online »](#)

Note: Immunogen Sequence Homology: Dog: 100%; Pig: 100%; Rat: 100%; Horse: 100%; Human: 100%; Mouse: 100%; Bovine: 100%; Rabbit: 100%; Guinea pig: 100%

Protein Families: Druggable Genome, Transcription Factors

Protein Pathways: Spliceosome

Product images:



WB Suggested Anti-XAB2 Antibody Titration: 0.2-1 ug/ml; ELISA Titer: 1: 1562500; Positive Control: PANC1 cell lysate