

## Product datasheet for **TA339734**

### ZC3H15 Rabbit Polyclonal Antibody

#### Product data:

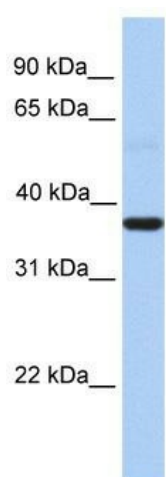
Product Type:	Primary Antibodies
Applications:	WB
Recommended Dilution:	WB
Reactivity:	Human
Host:	Rabbit
Isotype:	IgG
Clonality:	Polyclonal
Immunogen:	The immunogen for anti-ZC3H15 antibody: synthetic peptide directed towards the middle region of human ZC3H15. Synthetic peptide located within the following region: SGREVFEFRPELVNDDDEEADDTRYTQGTGGDEVDDSVSVNDIDLSLYIP
Formulation:	Liquid. Purified antibody supplied in 1x PBS buffer with 0.09% (w/v) sodium azide and 2% sucrose. <i>Note that this product is shipped as lyophilized powder to China customers.</i>
Concentration:	lot specific
Purification:	Affinity Purified
Conjugation:	Unconjugated
Storage:	Store at -20°C as received.
Stability:	Stable for 12 months from date of receipt.
Predicted Protein Size:	48 kDa
Gene Name:	zinc finger CCCH-type containing 15
Database Link:	<a href="#">NP_060941</a> <a href="#">Entrez Gene 55854 Human Q8WU90</a>
Background:	ZC3H15 belongs to the ZC3H15/TMA46 family. It contains 2 C3H1-type zinc fingers. ZC3H15 protects DRG1 from proteolytic degradation.
Synonyms:	HT010; LEREPO4; MSTP012



[View online »](#)

**Note:** Immunogen Sequence Homology: Pig: 100%; Rat: 100%; Horse: 100%; Human: 100%; Mouse: 100%; Rabbit: 100%; Guinea pig: 100%; Dog: 93%; Bovine: 93%; Yeast: 90%; Zebrafish: 85%

**Product images:**



WB Suggested Anti-ZC3H15 Antibody Titration:  
0.2-1 ug/ml; Positive Control: Human Lung