

Product datasheet for **TA339730**

CDCA4 Rabbit Polyclonal Antibody

Product data:

Product Type:	Primary Antibodies
Applications:	WB
Recommended Dilution:	WB
Reactivity:	Human
Host:	Rabbit
Isotype:	IgG
Clonality:	Polyclonal
Immunogen:	The immunogen for anti-CDCA4 antibody: synthetic peptide directed towards the middle region of human CDCA4. Synthetic peptide located within the following region: SSAWEMDGPRENRSFHKSLDQIFETLETKNPSCMEELFSDVDSPYYDLD
Formulation:	Liquid. Purified antibody supplied in 1x PBS buffer with 0.09% (w/v) sodium azide and 2% sucrose. <i>Note that this product is shipped as lyophilized powder to China customers.</i>
Concentration:	lot specific
Purification:	Affinity Purified
Conjugation:	Unconjugated
Storage:	Store at -20°C as received.
Stability:	Stable for 12 months from date of receipt.
Predicted Protein Size:	26 kDa
Gene Name:	cell division cycle associated 4
Database Link:	NP_060425 Entrez Gene 55038 Human Q9BXL8
Background:	The function of this gene is not known, but its existence is supported by mRNAs and EST data. A similar gene in mice was found to be expressed preferentially in hematopoietic progenitors and mature blood cells.
Synonyms:	HEPP; SEI-3

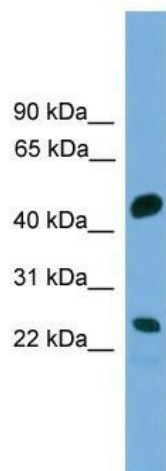


[View online »](#)

Note: Immunogen Sequence Homology: Human: 100%; Dog: 93%; Rat: 93%; Horse: 93%; Mouse: 93%; Bovine: 93%; Zebrafish: 86%; Pig: 79%; Guinea pig: 79%

Protein Families: ES Cell Differentiation/IPS

Product images:



WB Suggested Anti-CDCA4 Antibody Titration:
0.2-1 ug/ml; ELISA Titer: 1: 62500; Positive
Control: COLO205 cell lysate