

Product datasheet for TA339729

CDCA4 Rabbit Polyclonal Antibody

Product data:

Product Type:	Primary Antibodies
Applications:	WB
Recommended Dilution:	WB
Reactivity:	Human
Host:	Rabbit
Isotype:	IgG
Clonality:	Polyclonal
Immunogen:	The immunogen for anti-CDCA4 antibody: synthetic peptide directed towards the N terminal of human CDCA4. Synthetic peptide located within the following region: MFARGLKRKCVGHEEDVEGALAGLKTVSSYSLQRQSLDMSLVKQLQLCHM
Formulation:	Liquid. Purified antibody supplied in 1x PBS buffer with 0.09% (w/v) sodium azide and 2% sucrose. <i>Note that this product is shipped as lyophilized powder to China customers.</i>
Concentration:	lot specific
Purification:	Protein A purified
Conjugation:	Unconjugated
Storage:	Store at -20°C as received.
Stability:	Stable for 12 months from date of receipt.
Predicted Protein Size:	26 kDa
Gene Name:	cell division cycle associated 4
Database Link:	NP_060425 Entrez Gene 55038 Human Q9BXL8



[View online »](#)

Background:

The function of this gene is not known, but its existence is supported by mRNAs and EST data. A similar gene in mice was found to be expressed preferentially in hematopoietic progenitors and mature blood cells. The function of this gene is not known, but its existence is supported by mRNAs and EST data. A similar gene in mice was found to be expressed preferentially in hematopoietic progenitors and mature blood cells. Two alternatively spliced transcript variants encoding the same protein have been noted for this gene.

Synonyms:

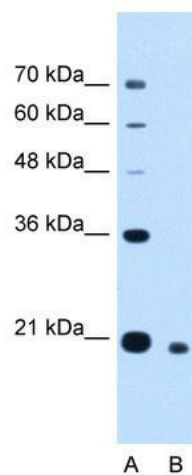
HEPP; SEI-3

Note:

Immunogen Sequence Homology: Dog: 100%; Pig: 100%; Horse: 100%; Human: 100%; Zebrafish: 100%; Guinea pig: 100%; Rat: 92%; Mouse: 92%

Protein Families:

ES Cell Differentiation/IPS

Product images:

WB Suggested Anti-CDCA4 Antibody Titration: 2.5 ug/ml; Positive Control: HepG2 cell lysate CDCA4 is supported by BioGPS gene expression data to be expressed in HepG2