

Product datasheet for **TA339728**

TIPIN Rabbit Polyclonal Antibody

Product data:

| | |
|-------------------------|---|
| Product Type: | Primary Antibodies |
| Applications: | WB |
| Recommended Dilution: | WB |
| Reactivity: | Human |
| Host: | Rabbit |
| Isotype: | IgG |
| Clonality: | Polyclonal |
| Immunogen: | The immunogen for anti-TIPIN antibody: synthetic peptide directed towards the middle region of human TIPIN. Synthetic peptide located within the following region: SESEMFASELSRSLTEEQQRIERNKQLALERRQAKLLSNSQTLGNDMLM |
| Formulation: | Liquid. Purified antibody supplied in 1x PBS buffer with 0.09% (w/v) sodium azide and 2% sucrose. <i>Note that this product is shipped as lyophilized powder to China customers.</i> |
| Concentration: | lot specific |
| Purification: | Affinity Purified |
| Conjugation: | Unconjugated |
| Storage: | Store at -20°C as received. |
| Stability: | Stable for 12 months from date of receipt. |
| Predicted Protein Size: | 34 kDa |
| Gene Name: | TIMELESS interacting protein |
| Database Link: | NP_060328 Entrez Gene 54962 Human Q9BVW5 |
| Background: | TIPIN belongs to the CSM3 family. TIPIN is required for normal progression of S-phase. It is important for cell survival after DNA damage or replication stress. TIPIN may be specifically required for the ATR-CHK1 pathway in the replication checkpoint induced by hydroxyurea or ultraviolet light. |
| Synonyms: | FLJ20516 |

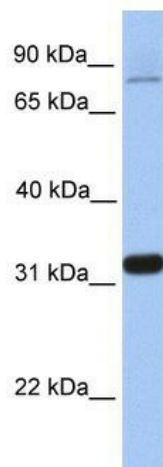


[View online »](#)

Note: Immunogen Sequence Homology: Dog: 100%; Pig: 100%; Rat: 100%; Human: 100%; Mouse: 100%; Bovine: 100%; Horse: 93%; Rabbit: 85%

Protein Families: Druggable Genome

Product images:



WB Suggested Anti-TIPIN Antibody Titration: 0.2-1 ug/ml; Positive Control: Human heart