

Product datasheet for **TA339726**

MBTD1 Rabbit Polyclonal Antibody

Product data:

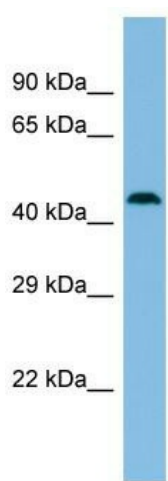
Product Type:	Primary Antibodies
Applications:	WB
Recommended Dilution:	WB
Reactivity:	Human
Host:	Rabbit
Isotype:	IgG
Clonality:	Polyclonal
Immunogen:	The immunogen for Anti-MBTD1 antibody is: synthetic peptide directed towards the N-terminal region of Human MBTD1. Synthetic peptide located within the following region: PFKPCMRVEVVDKRHLCTRVAVVESVIGGRLRLVYEESEDRTDDFWCHM
Formulation:	Liquid. Purified antibody supplied in 1x PBS buffer with 0.09% (w/v) sodium azide and 2% sucrose.
Concentration:	lot specific
Purification:	Affinity Purified
Conjugation:	Unconjugated
Storage:	Store at -20°C as received.
Stability:	Stable for 12 months from date of receipt.
Predicted Protein Size:	45 kDa
Gene Name:	mbt domain containing 1
Database Link:	NP_060113 Entrez Gene 54799 Human Q05BQ5
Background:	MBTD1 is a putative Polycomb group (PcG) protein. PcG proteins maintain the transcriptionally repressive state of genes, probably via a modification of chromatin, rendering it heritably changed in its expressibility. It is specifically binds to monomethylated and dimethylated 'Lys-20' on histone H4.
Synonyms:	SA49P01



[View online »](#)

Note: Immunogen Sequence Homology: Dog: 100%; Pig: 100%; Rat: 100%; Horse: 100%; Human: 100%; Mouse: 100%; Bovine: 100%; Rabbit: 100%; Guinea pig: 100%; Zebrafish: 86%; Yeast: 83%

Product images:



Host: Rabbit

Target Name: MBTD1

Sample Tissue: NCI-H226 Cell Lysate

Antibody Dilution: 1.0 µg/ml

Host: Rabbit; Target Name: MBTD1; Sample Tissue: NCI-H226 Whole Cell lysates; Antibody Dilution: 1.0 ug/ml MBTD1 is supported by BioGPS gene expression data to be expressed in NCIH226