

## Product datasheet for **TA339725**

### PTOV1 Rabbit Polyclonal Antibody

#### Product data:

Product Type:	Primary Antibodies
Applications:	IHC, WB
Recommended Dilution:	WB, IHC
Reactivity:	Human
Host:	Rabbit
Isotype:	IgG
Clonality:	Polyclonal
Immunogen:	The immunogen for anti-PTOV1 antibody: synthetic peptide directed towards the N terminal of human PTOV1. Synthetic peptide located within the following region: DSTAKLKRTLPCQAYVNQGENLETDQWPQKLIMQLIPQQLLTTLGPLFRN
Formulation:	Liquid. Purified antibody supplied in 1x PBS buffer with 0.09% (w/v) sodium azide and 2% sucrose.
Concentration:	lot specific
Purification:	Affinity Purified
Conjugation:	Unconjugated
Storage:	Store at -20°C as received.
Stability:	Stable for 12 months from date of receipt.
Predicted Protein Size:	47 kDa
Gene Name:	prostate tumor overexpressed 1
Database Link:	<a href="#">NP_059128</a> <a href="#">Entrez Gene 53635 Human</a> <a href="#">Q86YD1</a>
Background:	PTOV1 belongs to the Mediator complex subunit 25 family, PTOV1 subfamily. It may activate transcription and is required for nuclear translocation of FLOT1. PTOV1 promotes cell proliferation.
Synonyms:	ACID2; PTOV-1



[View online »](#)

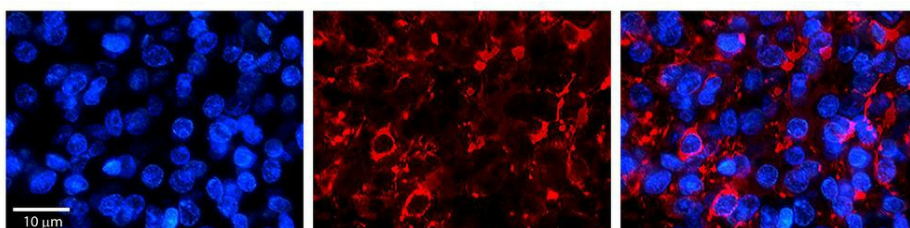
**Note:** Immunogen Sequence Homology: Dog: 100%; Pig: 100%; Rat: 100%; Human: 100%; Mouse: 100%; Bovine: 100%

**Protein Families:** Druggable Genome

**Product images:**



WB Suggested Anti-PTOV1 Antibody Titration: 0.2-1 ug/ml; Positive Control: Jurkat cell lysate PTOV1 is supported by BioGPS gene expression data to be expressed in Jurkat



Rabbit Anti-PTOV1 Antibody; Formalin Fixed Paraffin Embedded Tissue: Human Pineal Tissue; Observed Staining: Cytoplasmic and membrane in cell bodies and processes of pinealocytes and processes of interstitial cells; Primary Antibody Concentration: 1: 100;