

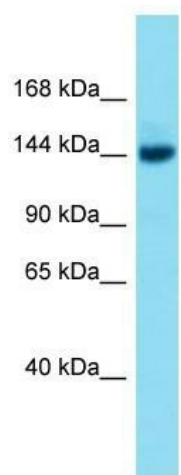
Product datasheet for **TA339723**

Brpf3 Rabbit Polyclonal Antibody

Product data:

Product Type:	Primary Antibodies
Applications:	WB
Recommended Dilution:	WB
Reactivity:	Mouse
Host:	Rabbit
Isotype:	IgG
Clonality:	Polyclonal
Immunogen:	The immunogen for Anti-Brpf3 antibody is synthetic peptide directed towards the middle region of Mouse Brpf3. Synthetic peptide located within the following region: LPAGSRGDTAVLEQAQQEPEEEGDRDDSKLPAPPTLEPTGPAPSLSEQE
Formulation:	Liquid. Purified antibody supplied in 1x PBS buffer with 0.09% (w/v) sodium azide and 2% sucrose.
Concentration:	lot specific
Purification:	Affinity Purified
Conjugation:	Unconjugated
Storage:	Store at -20°C as received.
Stability:	Stable for 12 months from date of receipt.
Predicted Protein Size:	135 kDa
Gene Name:	bromodomain and PHD finger containing, 3
Database Link:	NP_001074784 Entrez Gene 268936 Mouse B2KF05
Background:	The function of this protein remains unknown.
Synonyms:	KIAA1286
Note:	Immunogen Sequence Homology: Dog: 100%; Horse: 100%; Human: 100%; Rabbit: 100%; Bovine: 93%; Rat: 92%; Mouse: 86%


[View online »](#)

Product images:


Host: Rabbit; Target Name: Brpf3; Sample Tissue: Mouse Liver lysates; Antibody Dilution: 1.0 ug/ml