

Product datasheet for **TA339722**

BRPF3 Rabbit Polyclonal Antibody

Product data:

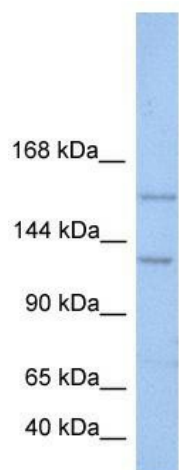
Product Type:	Primary Antibodies
Applications:	WB
Recommended Dilution:	WB
Reactivity:	Human
Host:	Rabbit
Isotype:	IgG
Clonality:	Polyclonal
Immunogen:	The immunogen for anti-BRPF3 antibody: synthetic peptide directed towards the N terminal of human BRPF3. Synthetic peptide located within the following region: CNSNKENSEQPQFPGKSKKPSSKGKKKESCSKHASGTSFHLPQPSFRMVD
Formulation:	Liquid. Purified antibody supplied in 1x PBS buffer with 0.09% (w/v) sodium azide and 2% sucrose.
Concentration:	lot specific
Purification:	Affinity Purified
Conjugation:	Unconjugated
Storage:	Store at -20°C as received.
Stability:	Stable for 12 months from date of receipt.
Predicted Protein Size:	136 kDa
Gene Name:	bromodomain and PHD finger containing 3
Database Link:	NP_056510 Entrez Gene 27154 Human Q9ULD4
Background:	BRPF3 contains 1 bromo domain, 1 PHD-type zinc finger and 1 PWWP domain. The exact function of BRPF3 remains unknown.
Synonyms:	3; bromodomain and PHD finger containing; OTTHUMP00000016287
Note:	Immunogen Sequence Homology: Dog: 100%; Pig: 100%; Rat: 100%; Horse: 100%; Human: 100%; Bovine: 100%; Rabbit: 100%; Guinea pig: 100%; Mouse: 92%



[View online »](#)

Protein Families: Druggable Genome

Product images:



WB Suggested Anti-BRPF3 Antibody Titration: 0.2-1 ug/ml; Positive Control: Jurkat cell lysate