

## Product datasheet for TA339721

### PYGO1 Rabbit Polyclonal Antibody

#### Product data:

Product Type:	Primary Antibodies
Applications:	WB
Recommended Dilution:	WB
Reactivity:	Human
Host:	Rabbit
Isotype:	IgG
Clonality:	Polyclonal
Immunogen:	The immunogen for anti-PYGO1 antibody: synthetic peptide directed towards the middle region of human PYGO1. Synthetic peptide located within the following region: SRSSSTEATNNNPANGTQNKPRQPRGAADACTTEKSNKSSLHPNRHGHSS
Formulation:	Liquid. Purified antibody supplied in 1x PBS buffer with 0.09% (w/v) sodium azide and 2% sucrose. <i>Note that this product is shipped as lyophilized powder to China customers.</i>
Concentration:	lot specific
Purification:	Affinity Purified
Conjugation:	Unconjugated
Storage:	Store at -20°C as received.
Stability:	Stable for 12 months from date of receipt.
Predicted Protein Size:	45 kDa
Gene Name:	pygopus family PHD finger 1
Database Link:	<a href="#">NP_056432</a> <a href="#">Entrez Gene 26108 Human Q9Y3Y4</a>
Background:	PYGO1 contains 1 PHD-type zinc finger. PYGO1 is involved in signal transduction through the Wnt pathway.
Synonyms:	DKFZp547G0910

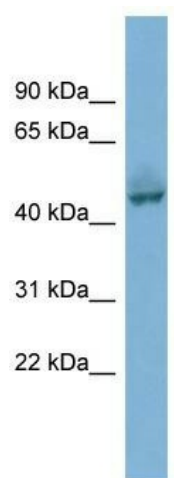


[View online »](#)

**Note:** Immunogen Sequence Homology: Dog: 100%; Pig: 100%; Horse: 100%; Human: 100%; Mouse: 100%; Rabbit: 100%; Rat: 93%; Bovine: 92%; Guinea pig: 79%

**Protein Families:** Druggable Genome

**Product images:**



WB Suggested Anti-PYGO1 Antibody Titration:  
0.2-1 ug/ml; ELISA Titer: 1: 62500; Positive  
Control: NCI-H226 cell lysate. PYGO1 is strongly  
supported by BioGPS gene expression data to be  
expressed in NCI-H226