

## Product datasheet for **TA339718**

### ZZZ3 Rabbit Polyclonal Antibody

#### Product data:

Product Type:	Primary Antibodies
Applications:	WB
Recommended Dilution:	WB
Reactivity:	Human
Host:	Rabbit
Isotype:	IgG
Clonality:	Polyclonal
Immunogen:	The immunogen for anti-ZZZ3 antibody: synthetic peptide directed towards the middle region of human ZZZ3. Synthetic peptide located within the following region: VKLVFDKVGGLPARPKSPLDPKKDGESELSYSMLPLSDGPEGSSSRPQMIRG
Formulation:	Liquid. Purified antibody supplied in 1x PBS buffer with 0.09% (w/v) sodium azide and 2% sucrose. <i>Note that this product is shipped as lyophilized powder to China customers.</i>
Concentration:	lot specific
Purification:	Affinity Purified
Conjugation:	Unconjugated
Storage:	Store at -20°C as received.
Stability:	Stable for 12 months from date of receipt.
Predicted Protein Size:	48 kDa
Gene Name:	zinc finger ZZ-type containing 3
Database Link:	<a href="#">NP_056349</a> <a href="#">Entrez Gene 26009 Human</a> <a href="#">Q8IYH5</a>
Background:	ZZZ3 contains 1 HTH myb-type DNA-binding domain and 1 ZZ-type zinc finger. The exact function of ZZZ3 remains unknown.
Synonyms:	ATAC1

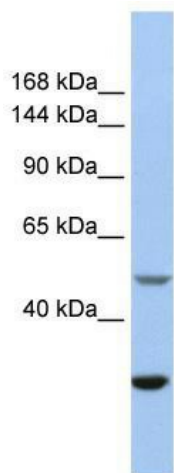


[View online »](#)

**Note:** Immunogen Sequence Homology: Dog: 100%; Horse: 100%; Human: 100%; Mouse: 100%; Rabbit: 100%; Pig: 93%; Bovine: 93%; Guinea pig: 93%; Rat: 92%; Zebrafish: 79%

**Protein Families:** Transcription Factors

**Product images:**



WB Suggested Anti-ZZZ3 Antibody Titration: 0.2-1 ug/ml; Positive Control: Jurkat cell lysate