

Product datasheet for **TA339717**

SIN3B Rabbit Polyclonal Antibody

Product data:

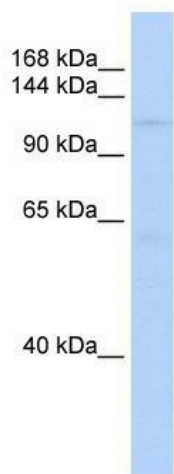
Product Type:	Primary Antibodies
Applications:	WB
Recommended Dilution:	WB
Reactivity:	Human
Host:	Rabbit
Isotype:	IgG
Clonality:	Polyclonal
Immunogen:	The immunogen for anti-SIN3B antibody: synthetic peptide directed towards the middle region of human SIN3B. Synthetic peptide located within the following region: LVSDDVCLKVVELYLNEKKRGAAGGNLSSRCVRAARETSYQWKAERCMA
Formulation:	Liquid. Purified antibody supplied in 1x PBS buffer with 0.09% (w/v) sodium azide and 2% sucrose.
Concentration:	lot specific
Purification:	Affinity Purified
Conjugation:	Unconjugated
Storage:	Store at -20°C as received.
Stability:	Stable for 12 months from date of receipt.
Predicted Protein Size:	133 kDa
Gene Name:	SIN3 transcription regulator family member B
Database Link:	NP_056075 Entrez Gene 23309 Human O75182
Background:	SIN3B acts as a transcriptional repressor. It interacts with MXI1 to repress MYC responsive genes and antagonize MYC oncogenic activities. Also, it interacts with MAD-MAX heterodimers by binding to MAD. The heterodimer then represses transcription by tethering SIN3B to DNA. The gene is also able to form a complex with FOXK1 which represses transcription
Synonyms:	KIAA0700



[View online »](#)

Note: Immunogen Sequence Homology: Dog: 100%; Pig: 100%; Horse: 100%; Human: 100%; Bovine: 100%; Guinea pig: 93%; Zebrafish: 92%; Mouse: 86%; Rat: 79%

Product images:



WB Suggested Anti-SIN3B Antibody Titration: 0.2-1 ug/ml; ELISA Titer: 1: 62500; Positive Control: HCT15 cell lysate