

## Product datasheet for **TA339716**

### SIN3B Rabbit Polyclonal Antibody

#### Product data:

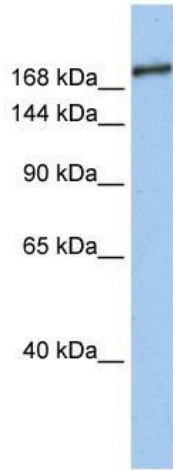
Product Type:	Primary Antibodies
Applications:	WB
Recommended Dilution:	WB
Reactivity:	Human
Host:	Rabbit
Isotype:	IgG
Clonality:	Polyclonal
Immunogen:	The immunogen for anti-SIN3B antibody: synthetic peptide directed towards the middle region of human SIN3B. Synthetic peptide located within the following region: NDTKALRSKSLLEIESVYDEHQEQHSEGRSAPSSEPHLIFVYEDRQILE
Formulation:	Liquid. Purified antibody supplied in 1x PBS buffer with 0.09% (w/v) sodium azide and 2% sucrose. <i>Note that this product is shipped as lyophilized powder to China customers.</i>
Concentration:	lot specific
Purification:	Affinity Purified
Conjugation:	Unconjugated
Storage:	Store at -20°C as received.
Stability:	Stable for 12 months from date of receipt.
Predicted Protein Size:	133 kDa
Gene Name:	SIN3 transcription regulator family member B
Database Link:	<a href="#">NP_056075</a> <a href="#">Entrez Gene 23309 Human</a> <a href="#">O75182</a>
Background:	SIN3B acts as a transcriptional repressor. It interacts with MXI1 to repress MYC responsive genes and antagonize MYC oncogenic activities. It also interacts with MAD-MAX heterodimers by binding to MAD. The heterodimer then represses transcription by tethering SIN3B to DNA. SIN3B also forms a complex with FOXK1 which represses transcription.
Synonyms:	KIAA0700



[View online »](#)

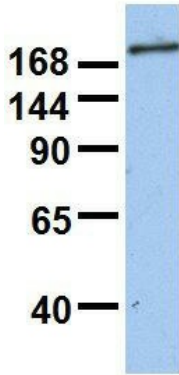
**Note:** Immunogen Sequence Homology: Dog: 100%; Pig: 100%; Human: 100%; Mouse: 100%; Bovine: 100%; Rat: 93%; Rabbit: 93%; Guinea pig: 93%; Horse: 86%

**Product images:**



WB Suggested Anti-SIN3B Antibody Titration: 0.2-1 ug/ml; Positive Control: Human brain

**SIN3B**



Rabbit Anti-SIN3B  
 Sample Type: Human Fetal Brain  
 Antibody Concentration: 1ug/mL

Host: Rabbit; Target Name: SIN3B; Sample Tissue: Human Fetal Brain; Antibody Dilution: 1.0 ug/ml