

Product datasheet for **TA339712**

MED4 Rabbit Polyclonal Antibody

Product data:

Product Type:	Primary Antibodies
Applications:	IHC, WB
Recommended Dilution:	WB, IHC
Reactivity:	Human
Host:	Rabbit
Isotype:	IgG
Clonality:	Polyclonal
Immunogen:	The immunogen for anti-MED4 antibody: synthetic peptide directed towards the C terminal of human MED4. Synthetic peptide located within the following region: APQYPWQSNDSMNMLPPNHSSDFLLEPPGHNKENEDDVEIMSTDSSSSS
Formulation:	Liquid. Purified antibody supplied in 1x PBS buffer with 0.09% (w/v) sodium azide and 2% sucrose. <i>Note that this product is shipped as lyophilized powder to China customers.</i>
Concentration:	lot specific
Purification:	Affinity Purified
Conjugation:	Unconjugated
Storage:	Store at -20°C as received.
Stability:	Stable for 12 months from date of receipt.
Predicted Protein Size:	30 kDa
Gene Name:	mediator complex subunit 4
Database Link:	NP_054885 Entrez Gene 29079 Human Q9NPJ6
Background:	TMED4 contains 1 GOLD domain and belongs to the EMP24/GP25L family. The function remains unknown.
Synonyms:	ARC36; DRIP36; HSPC126; TRAP36; VDRIP

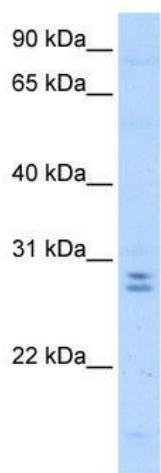


[View online »](#)

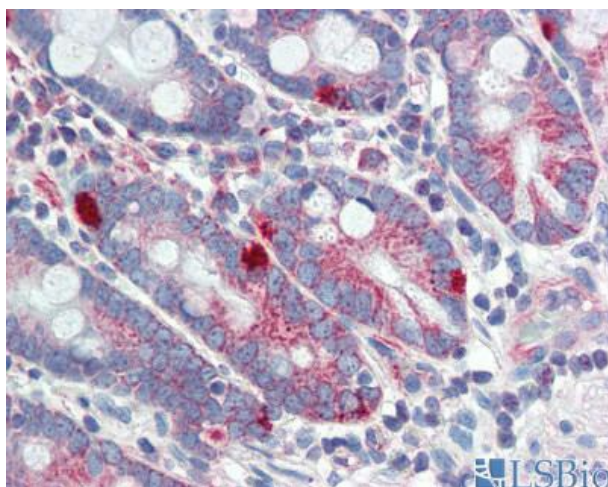
Note: Immunogen Sequence Homology: Dog: 100%; Pig: 100%; Rat: 100%; Horse: 100%; Human: 100%; Mouse: 100%; Bovine: 100%; Rabbit: 100%; Zebrafish: 100%; Guinea pig: 100%

Protein Families: Druggable Genome, Transcription Factors

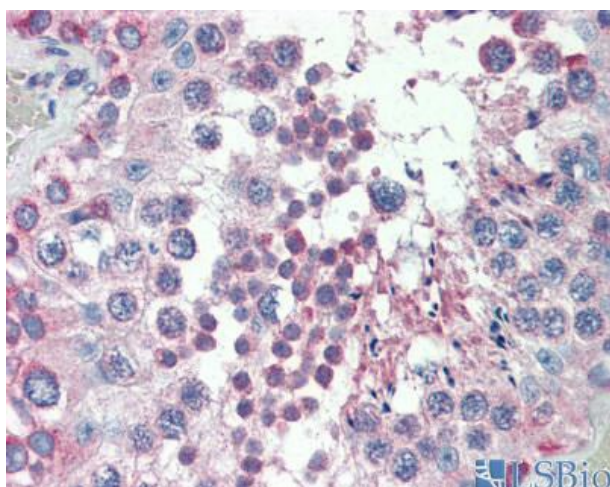
Product images:



WB Suggested Anti-MED4 Antibody Titration: 0.5 ug/ml; Positive Control: HepG2 cell lysate



Human Testis



Human Testis