

## Product datasheet for **TA339711**

### MED4 Rabbit Polyclonal Antibody

#### Product data:

Product Type:	Primary Antibodies
Applications:	IHC, WB
Recommended Dilution:	WB, IHC
Reactivity:	Human
Host:	Rabbit
Isotype:	IgG
Clonality:	Polyclonal
Immunogen:	The immunogen for anti-MED4 antibody: synthetic peptide directed towards the middle region of human MED4. Synthetic peptide located within the following region: EEIIKYAHRISASNAVCAPLTWVPGDPRRYPYPTDLEMRSGLLGQMNNPST
Formulation:	Liquid. Purified antibody supplied in 1x PBS buffer with 0.09% (w/v) sodium azide and 2% sucrose. <i>Note that this product is shipped as lyophilized powder to China customers.</i>
Concentration:	lot specific
Purification:	Affinity Purified
Conjugation:	Unconjugated
Storage:	Store at -20°C as received.
Stability:	Stable for 12 months from date of receipt.
Predicted Protein Size:	30 kDa
Gene Name:	mediator complex subunit 4
Database Link:	<a href="#">NP_054885</a> <a href="#">Entrez Gene 29079 Human</a> <a href="#">Q9NPJ6</a>
Background:	TMED4 contains 1 GOLD domain and belongs to the EMP24/GP25L family. The function remains unknown.
Synonyms:	ARC36; DRIP36; HSPC126; TRAP36; VDRIP



[View online »](#)

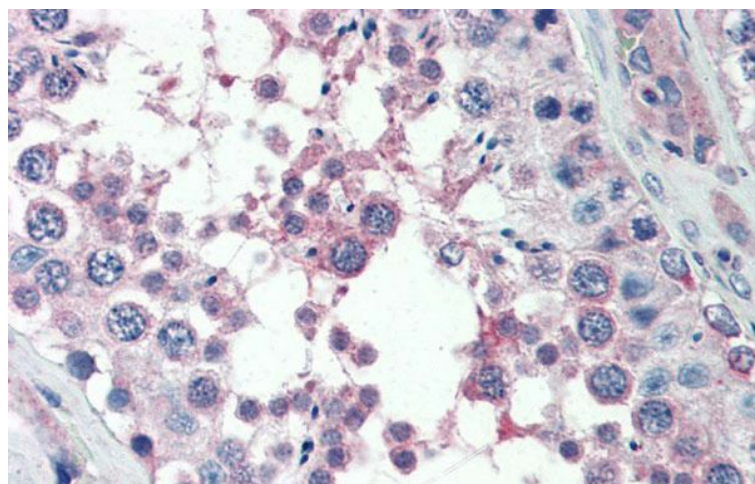
**Note:** Immunogen Sequence Homology: Dog: 100%; Pig: 100%; Rat: 100%; Horse: 100%; Human: 100%; Mouse: 100%; Bovine: 100%; Rabbit: 100%; Zebrafish: 100%; Guinea pig: 100%

**Protein Families:** Druggable Genome, Transcription Factors

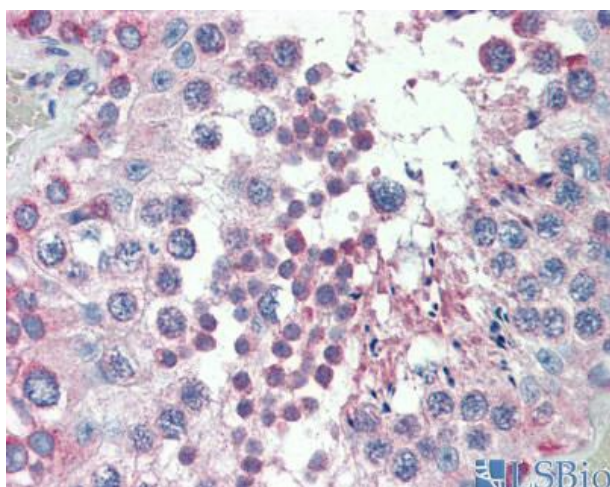
**Product images:**



WB Suggested Anti-MED4 Antibody Titration: 1 ug/ml; Positive Control: Fetal liver cell lysate



Immunohistochemistry with Human Testis lysate tissue at an antibody concentration of 5.0 ug/ml using anti-MED4 antibody



Human Testis