

Product datasheet for **TA339707**

PWP1 Rabbit Polyclonal Antibody

Product data:

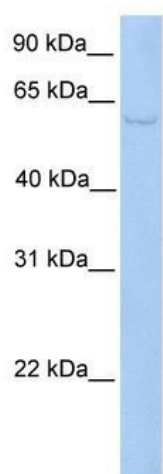
Product Type:	Primary Antibodies
Applications:	WB
Recommended Dilution:	WB
Reactivity:	Human
Host:	Rabbit
Isotype:	IgG
Clonality:	Polyclonal
Immunogen:	The immunogen for anti-PWP1 antibody: synthetic peptide directed towards the C terminal of human PWP1. Synthetic peptide located within the following region: FCSSCCPDLPIYAFGGQKEGLRVWDISTVSSVNEAFGRRLVLSARN
Formulation:	Liquid. Purified antibody supplied in 1x PBS buffer with 0.09% (w/v) sodium azide and 2% sucrose.
Concentration:	lot specific
Purification:	Affinity Purified
Conjugation:	Unconjugated
Storage:	Store at -20°C as received.
Stability:	Stable for 12 months from date of receipt.
Predicted Protein Size:	56 kDa
Gene Name:	PWP1 homolog, endonuclein
Database Link:	NP_008993 Entrez Gene 11137 Human Q13610
Background:	PWP1 belongs to the WD repeat PWP1 family. It contains 5 WD repeats. PWP1 may play an important role in cell growth and/or transcription.
Synonyms:	IEF-SSP-9502
Note:	Immunogen Sequence Homology: Dog: 100%; Pig: 100%; Rat: 100%; Horse: 100%; Human: 100%; Mouse: 100%; Bovine: 100%; Rabbit: 100%; Guinea pig: 100%



[View online »](#)

Protein Families: Transcription Factors

Product images:



WB Suggested Anti-PWP1 Antibody Titration: 0.2-1 ug/ml; Positive Control: HepG2 cell lysate