

Product datasheet for **TA339703**

NPR2L (NPRL2) Rabbit Polyclonal Antibody

Product data:

Product Type:	Primary Antibodies
Applications:	WB
Recommended Dilution:	WB
Reactivity:	Human
Host:	Rabbit
Isotype:	IgG
Clonality:	Polyclonal
Immunogen:	The immunogen for anti-TUSC4 antibody: synthetic peptide directed towards the middle region of human TUSC4. Synthetic peptide located within the following region: SLSPGTTVRDLIGRHPQQLQHVDERKLIQFGLMKNLIRRLQKYPVRVTRE
Formulation:	Liquid. Purified antibody supplied in 1x PBS buffer with 0.09% (w/v) sodium azide and 2% sucrose. <i>Note that this product is shipped as lyophilized powder to China customers.</i>
Concentration:	lot specific
Purification:	Affinity Purified
Conjugation:	Unconjugated
Storage:	Store at -20°C as received.
Stability:	Stable for 12 months from date of receipt.
Predicted Protein Size:	44 kDa
Gene Name:	NPR2-like, GATOR1 complex subunit
Database Link:	NP_006536 Entrez Gene 10641 Human Q8WTW4
Background:	TUSC4 suppresses Src-dependent tyrosine phosphorylation and activation of PDPK1 and its downstream signaling. TUSC4 down-regulates PDPK1 kinase activity by interfering with tyrosine phosphorylation at the Tyr-9 Tyr-373 and Tyr-376 residues. TUSC4 may act
Synonyms:	FFEVF2; NPR2; NPR2L; TUSC4

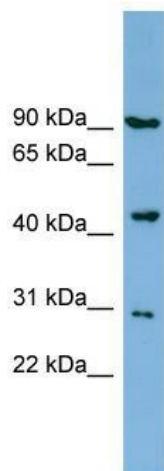


[View online »](#)

Note: Immunogen Sequence Homology: Pig: 100%; Rat: 100%; Human: 100%; Mouse: 100%; Bovine: 100%; Rabbit: 100%; Guinea pig: 100%; Dog: 93%; Horse: 93%

Protein Families: Druggable Genome

Product images:



WB Suggested Anti-NPRL2 Antibody Titration: 0.2-1 ug/ml; ELISA Titer: 1: 1562500; Positive Control: NCI-H226 cell lysate