

Product datasheet for **TA339702**

NPR2L (NPRL2) Rabbit Polyclonal Antibody

Product data:

Product Type:	Primary Antibodies
Applications:	IHC, WB
Recommended Dilution:	WB, IHC
Reactivity:	Human
Host:	Rabbit
Isotype:	IgG
Clonality:	Polyclonal
Immunogen:	The immunogen for anti-TUSC4 antibody: synthetic peptide directed towards the N terminal of human TUSC4. Synthetic peptide located within the following region: MGS GCRIECIFFSEFHPTLGPKITYQVPEDFISRELFDTVQVYIITKPEL
Formulation:	Liquid. Purified antibody supplied in 1x PBS buffer with 0.09% (w/v) sodium azide and 2% sucrose. <i>Note that this product is shipped as lyophilized powder to China customers.</i>
Concentration:	lot specific
Purification:	Affinity Purified
Conjugation:	Unconjugated
Storage:	Store at -20°C as received.
Stability:	Stable for 12 months from date of receipt.
Predicted Protein Size:	44 kDa
Gene Name:	NPR2-like, GATOR1 complex subunit
Database Link:	NP_006536 Entrez Gene 10641 Human Q8WTW4
Background:	TUSC4 suppresses Src-dependent tyrosine phosphorylation and activation of PDK1 and its downstream signaling. TUSC4 down-regulates PDK1 kinase activity by interfering with tyrosine phosphorylation at the Tyr-9 Tyr-373 and Tyr-376 residues. TUSC4 may act as a tumor suppressor. TUSC4 suppresses cell growth and enhanced sensitivity to various anticancer drugs.



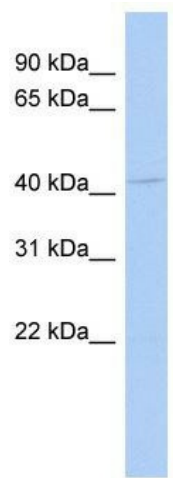
[View online »](#)

Synonyms: FFEVF2; NPR2; NPR2L; TUSC4

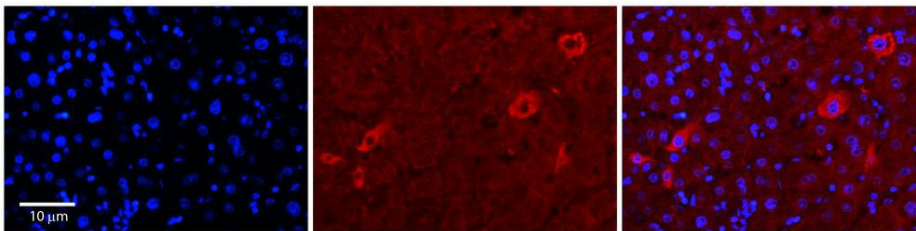
Note: Immunogen Sequence Homology: Dog: 100%; Pig: 100%; Rat: 100%; Human: 100%; Mouse: 100%; Bovine: 100%; Rabbit: 100%; Zebrafish: 100%; Guinea pig: 100%

Protein Families: Druggable Genome

Product images:



WB Suggested Anti-NPRL2 Antibody Titration: 0.2-1 ug/ml; ELISA Titer: 1: 312500; Positive Control: OVCAR-3 cell lysate NPRL2 is supported by BioGPS gene expression data to be expressed in OVCAR3



Rabbit Anti-NPRL2 Antibody; Formalin Fixed Paraffin Embedded Tissue: Human Adult Liver; Observed Staining: Cytoplasm in hepatocytes, moderate signal, very low tissue distribution; Primary Antibody Concentration: 1: 100; Secondary Antibody: Donkey anti-Rab