

## Product datasheet for **TA339700**

### COG5 Rabbit Polyclonal Antibody

#### Product data:

Product Type:	Primary Antibodies
Applications:	WB
Recommended Dilution:	WB
Reactivity:	Human, Mouse
Host:	Rabbit
Isotype:	IgG
Clonality:	Polyclonal
Immunogen:	The immunogen for anti-COG5 antibody: synthetic peptide directed towards the N terminal of human COG5. Synthetic peptide located within the following region: MGWVGRRRDSASPPGRSRSAAADDINPAPANMEGGGGSVAVAGLGARGSG
Formulation:	Liquid. Purified antibody supplied in 1x PBS buffer with 0.09% (w/v) sodium azide and 2% sucrose. <i>Note that this product is shipped as lyophilized powder to China customers.</i>
Concentration:	lot specific
Purification:	Affinity Purified
Conjugation:	Unconjugated
Storage:	Store at -20°C as received.
Stability:	Stable for 12 months from date of receipt.
Predicted Protein Size:	95 kDa
Gene Name:	component of oligomeric golgi complex 5
Database Link:	<a href="#">NP_006339</a> <a href="#">Entrez Gene 10466 Human</a> <a href="#">Q9UP83</a>



[View online »](#)

**Background:**

COG5 is required for normal Golgi function. Multiprotein complexes are key determinants of Golgi apparatus structure and its capacity for intracellular transport and glycoprotein modification. Several complexes have been identified, including the Golgi transport complex (GTC), the LDLC complex, which is involved in glycosylation reactions, and the SEC34 complex, which is involved in vesicular transport. These 3 complexes are identical and have been termed the conserved oligomeric Golgi (COG) complex, which includes COG5 (Ungar et al., 2002 [PubMed 11980916]). [supplied by OMIM]

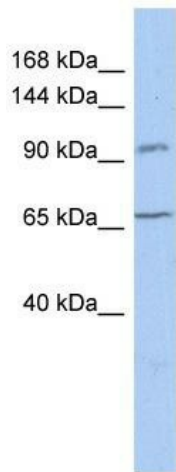
**Synonyms:**

CDG2I; GOLTC1; GTC90

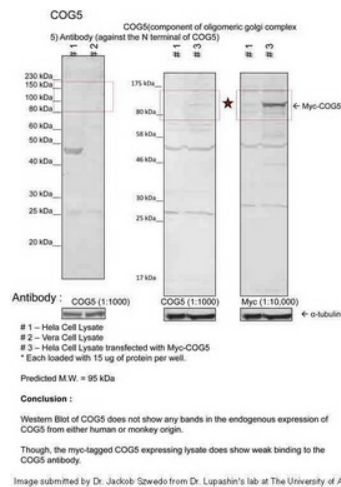
**Note:**

Immunogen Sequence Homology: Human: 100%

**Product images:**



WB Suggested Anti-COG5 Antibody Titration: 0.2-1 ug/ml; ELISA Titer: 1: 312500; Positive Control: THP-1 cell lysate



Sample Type: 1. Human Cervical Cancer Cell Lysate (15 ug); 2. Monkey Fibroblast Cell Lysate (15 ug); 3. Human Cervical Cancer Cell transfected with Myc-COG4 (15ug); Primary Dilution: 1: 1000; Secondary Antibody: goat anti-Rabbit; Secondary Dilution: 1: 40