

## Product datasheet for **TA339699**

### C1D Rabbit Polyclonal Antibody

#### Product data:

Product Type:	Primary Antibodies
Applications:	WB
Recommended Dilution:	WB
Reactivity:	Human
Host:	Rabbit
Isotype:	IgG
Clonality:	Polyclonal
Immunogen:	The immunogen for anti-C1D antibody: synthetic peptide directed towards the middle region of human C1D. Synthetic peptide located within the following region: LDPLEQAKVDLVSAYTLNSMFVWYLATQGVNPKVKEHPVKQELERIRVYMNR
Formulation:	Liquid. Purified antibody supplied in 1x PBS buffer with 0.09% (w/v) sodium azide and 2% sucrose. <i>Note that this product is shipped as lyophilized powder to China customers.</i>
Concentration:	lot specific
Purification:	Affinity Purified
Conjugation:	Unconjugated
Storage:	Store at -20°C as received.
Stability:	Stable for 12 months from date of receipt.
Predicted Protein Size:	16 kDa
Gene Name:	C1D nuclear receptor corepressor
Database Link:	<a href="#">NP_006324</a> <a href="#">Entrez Gene 10438 Human</a> <a href="#">Q13901</a>



[View online »](#)

**Background:**

C1D is a DNA binding and apoptosis-inducing protein and is localized in the nucleus. It is also a Rac3-interacting protein which acts as a corepressor for the thyroid hormone receptor. C1D is thought to regulate TRAX/Translin complex formation. The protein encoded by this gene is a DNA binding and apoptosis-inducing protein and is localized in the nucleus. It is also a Rac3-interacting protein which acts as a corepressor for the thyroid hormone receptor. This protein is thought to regulate TRAX/Translin complex formation. Several alternatively spliced transcript variants of this gene have been described, but the full length nature of some of these variants has not been determined. The protein encoded by this gene is a DNA binding and apoptosis-inducing protein and is localized in the nucleus. It is also a Rac3-interacting protein which acts as a corepressor for the thyroid hormone receptor. This protein is thought to regulate TRAX/Translin complex formation. Several alternatively spliced transcript variants of this gene have been described, but the full length nature of some of these variants has not been determined.

**Synonyms:**

hC1D; LRP1; Rrp47; SUN-CoR; SUNCOR

**Note:**

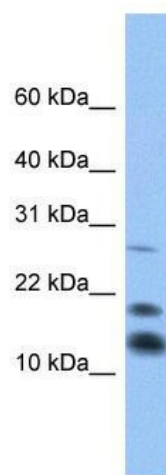
Immunogen Sequence Homology: Dog: 100%; Pig: 100%; Rat: 100%; Horse: 100%; Human: 100%; Mouse: 100%; Bovine: 100%; Rabbit: 100%; Guinea pig: 100%; Zebrafish: 86%

**Protein Families:**

Druggable Genome

**Protein Pathways:**

RNA degradation

**Product images:**

WB Suggested Anti-C1D Antibody Titration: 0.2-1 ug/ml; Positive Control: Human heart