

Product datasheet for **TA339697**

NuMA (NUMA1) Rabbit Polyclonal Antibody

Product data:

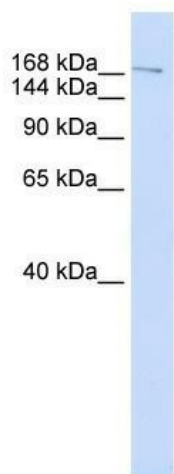
Product Type:	Primary Antibodies
Applications:	WB
Recommended Dilution:	WB
Reactivity:	Human
Host:	Rabbit
Isotype:	IgG
Clonality:	Polyclonal
Immunogen:	The immunogen for anti-NUMA1 antibody: synthetic peptide directed towards the C terminal of human NUMA1. Synthetic peptide located within the following region: AQRLQAQLNELQAQLSQKEQA AEHYKLQMEKAKTHYDAKKQQNQELQEQL
Formulation:	Liquid. Purified antibody supplied in 1x PBS buffer with 0.09% (w/v) sodium azide and 2% sucrose.
Concentration:	lot specific
Purification:	Affinity Purified
Conjugation:	Unconjugated
Storage:	Store at -20°C as received.
Stability:	Stable for 12 months from date of receipt.
Predicted Protein Size:	238 kDa
Gene Name:	nuclear mitotic apparatus protein 1
Database Link:	NP_006176 Entrez Gene 4926 Human Q14980
Background:	NuMA is a structural element in maintaining nuclear integrity. A critical spindle pole-associated mechanism, called the END (Emi1/NuMA/dynein-dynactin) network, spatially restricts APC/C activity in early mitosis. The entire coding region and exon-intron boundaries of NuMa were screened in 92 familial breast cancer patients. But the results do not support the role of NuMA variants as breast cancer susceptibility alleles.
Synonyms:	NMP-22; NUMA



[View online »](#)

Note: Immunogen Sequence Homology: Dog: 100%; Pig: 100%; Rat: 100%; Horse: 100%; Human: 100%; Mouse: 100%; Bovine: 100%; Rabbit: 100%; Guinea pig: 100%

Product images:



WB Suggested Anti-NUMA1 Antibody Titration:
0.2-1 ug/ml; ELISA Titer: 1: 12500; Positive
Control: Human Lung