

## Product datasheet for **TA339696**

### YAP1 Rabbit Polyclonal Antibody

#### Product data:

Product Type:	Primary Antibodies
Applications:	IHC, WB
Recommended Dilution:	WB, IHC
Reactivity:	Human
Host:	Rabbit
Isotype:	IgG
Clonality:	Polyclonal
Immunogen:	The immunogen for anti-YAP1 antibody: synthetic peptide directed towards the C terminal of human YAP1. Synthetic peptide located within the following region: QLPTLEQDGGTQNPVSSPGMSQELRTMTTNSSDPFLNSGTYHSRDESTDS
Formulation:	Liquid. Purified antibody supplied in 1x PBS buffer with 0.09% (w/v) sodium azide and 2% sucrose. <i>Note that this product is shipped as lyophilized powder to China customers.</i>
Concentration:	lot specific
Purification:	Affinity Purified
Conjugation:	Unconjugated
Storage:	Store at -20°C as received.
Stability:	Stable for 12 months from date of receipt.
Predicted Protein Size:	54 kDa
Gene Name:	Yes associated protein 1
Database Link:	<a href="#">NP_001123617</a> <a href="#">Entrez Gene 10413 Human</a> <a href="#">P46937</a>
Background:	YAP1 is the human ortholog of chicken YAP protein which binds to the SH3 domain of the Yes proto-oncogene product. YAP1 contains a WW domain that is found in various structural, regulatory and signaling molecules in yeast, nematode, and mammals, and may be involved in protein-protein interaction.
Synonyms:	COB1; YAP; YAP2; YAP65; YKI



[View online »](#)

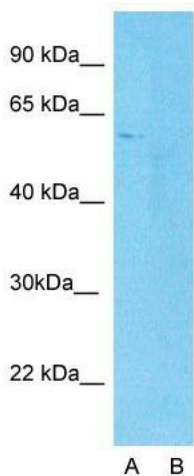
**Note:** Immunogen Sequence Homology: Dog: 100%; Pig: 100%; Rat: 100%; Horse: 100%; Human: 100%; Mouse: 100%; Sheep: 100%; Bovine: 100%; Rabbit: 100%; Zebrafish: 100%

**Protein Families:** Druggable Genome

**Product images:**



WB Suggested Anti-YAP1 Antibody Titration: 1 ug/ml; Positive Control: 721\_B cell lysate



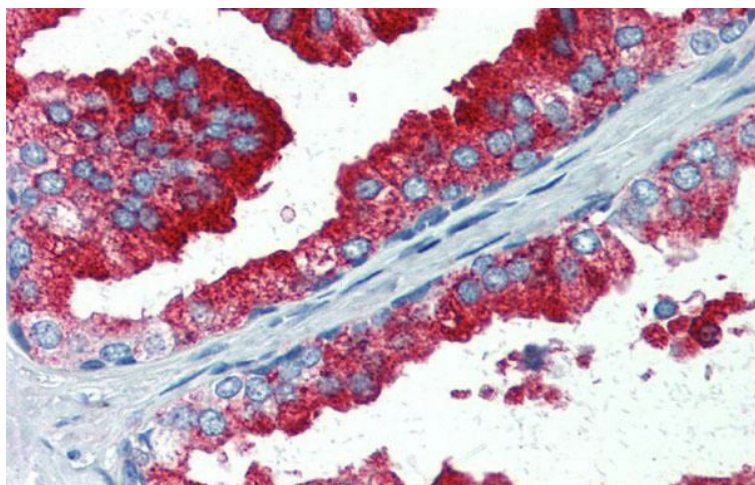
**Anti-YAP1 Western Blot & Peptide Block Validation**

Lysate: Fetal Lung

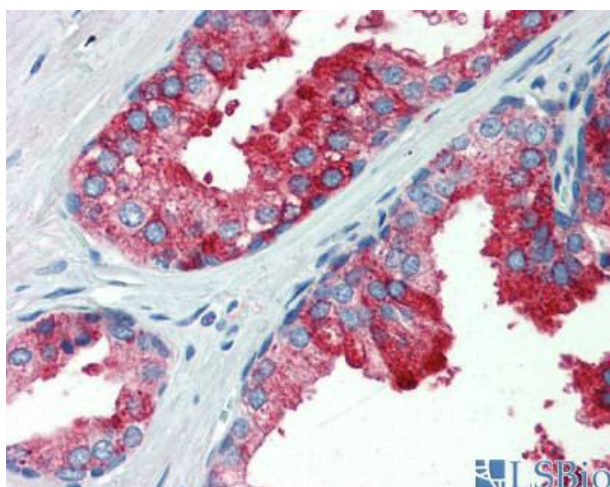
Lane A: Primary Antibody  
Lane B: Primary Antibody + Blocking Peptide

Primary Antibody Concentration: 1.0µg/ml  
Peptide Concentration: 5.0µg/ml  
Lysate Quantity: 25µg/lane  
Gel Concentration: 12%

Host: Rabbit; Target Name: YAP1; Sample Tissue: Human Fetal Lung cell; Lane A: Primary Antibody; Lane B: Primary Antibody + Blocking Peptide; Primary Antibody Concentration: 1 ug/ml; Peptide Concentration: 5.0 ug/ml; Lysate Quantity: 25 ug/lane/lane; Gel



Immunohistochemistry with Human Prostate lysate tissue at an antibody concentration of 5.0 ug/ml using anti-YAP1 antibody



Human Prostate