

Product datasheet for **TA339695**

SMYD5 Rabbit Polyclonal Antibody

Product data:

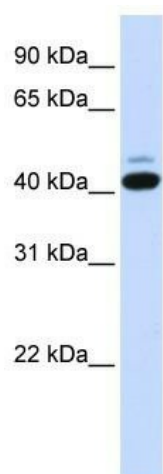
Product Type:	Primary Antibodies
Applications:	WB
Recommended Dilution:	WB
Reactivity:	Human
Host:	Rabbit
Isotype:	IgG
Clonality:	Polyclonal
Immunogen:	The immunogen for anti-SMYD5 antibody: synthetic peptide directed towards the C terminal of human SMYD5. Synthetic peptide located within the following region: HSRHKILRENYLFVCSPKCLAEADPNVTSEEEEEEEEEEGEPEDAEL
Formulation:	Liquid. Purified antibody supplied in 1x PBS buffer with 0.09% (w/v) sodium azide and 2% sucrose.
Concentration:	lot specific
Purification:	Affinity Purified
Conjugation:	Unconjugated
Storage:	Store at -20°C as received.
Stability:	Stable for 12 months from date of receipt.
Predicted Protein Size:	47 kDa
Gene Name:	SMYD family member 5
Database Link:	NP_006053 Entrez Gene 10322 Human Q6GMV2
Background:	SMYD5 contains 1 MYND-type zinc finger and 1 SET domain. The exact function of SMYD5 remains unknown.
Synonyms:	NN8-4AG; RAI15; RRG1; ZMYND23
Note:	Immunogen Sequence Homology: Dog: 100%; Pig: 100%; Rat: 100%; Horse: 100%; Human: 100%; Mouse: 100%; Bovine: 100%; Rabbit: 100%; Guinea pig: 100%; Zebrafish: 93%



[View online »](#)

Protein Families: Druggable Genome

Product images:



WB Suggested Anti-SMYD5 Antibody Titration:
0.2-1 ug/ml; ELISA Titer: 1: 62500; Positive
Control: Hela cell lysate SMYD5 is supported by
BioGPS gene expression data to be expressed in
HeLa