

Product datasheet for **TA339691**

Sprouty 1 (SPRY1) Rabbit Polyclonal Antibody

Product data:

Product Type:	Primary Antibodies
Applications:	WB
Recommended Dilution:	WB
Reactivity:	Human, Mouse
Host:	Rabbit
Isotype:	IgG
Clonality:	Polyclonal
Immunogen:	The immunogen for Anti-SPRY1 antibody is: synthetic peptide directed towards the N-terminal region of Human SPRY1. Synthetic peptide located within the following region: PTAILSLDQIKAIRGSNEYTEGPSVVKRPAPRTAPRQEKHERTHEIIPIN
Formulation:	Liquid. Purified antibody supplied in 1x PBS buffer with 0.09% (w/v) sodium azide and 2% sucrose. <i>Note that this product is shipped as lyophilized powder to China customers.</i>
Concentration:	lot specific
Purification:	Affinity Purified
Conjugation:	Unconjugated
Storage:	Store at -20°C as received.
Stability:	Stable for 12 months from date of receipt.
Predicted Protein Size:	35 kDa
Gene Name:	sprouty RTK signaling antagonist 1
Database Link:	NP_005832 Entrez Gene 24063 Mouse Entrez Gene 10252 Human O43609
Background:	SPRY1 belongs to the sprouty family. It contains 1 SPR (sprouty) domain. SPRY1 may function as an antagonist of fibroblast growth factor (FGF) pathways and may negatively modulate respiratory organogenesis.
Synonyms:	hSPRY1



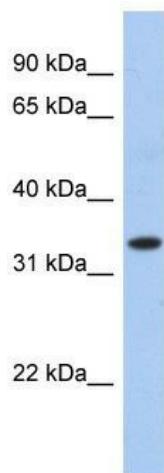
[View online »](#)

Note: Immunogen Sequence Homology: Dog: 100%; Pig: 100%; Rat: 100%; Horse: 100%; Human: 100%; Mouse: 100%; Bovine: 100%; Rabbit: 100%; Zebrafish: 100%; Guinea pig: 100%

Protein Families: Druggable Genome

Protein Pathways: Jak-STAT signaling pathway

Product images:



WB Suggested Anti-SPRY1 Antibody Titration: 0.2-1 ug/ml; ELISA Titer: 1: 1562500; Positive Control: 293T cell lysate