

Product datasheet for **TA339689**

Sprouty 3 (SPRY3) Rabbit Polyclonal Antibody

Product data:

Product Type:	Primary Antibodies
Applications:	WB
Recommended Dilution:	WB
Reactivity:	Human
Host:	Rabbit
Isotype:	IgG
Clonality:	Polyclonal
Immunogen:	The immunogen for anti-SPRY3 antibody: synthetic peptide directed towards the N terminal of human SPRY3. Synthetic peptide located within the following region: ALSSPSLIVQTHKSDWSLATMPTSLPRSLSQCHQLQPLPQHLSQSSIASS
Formulation:	Liquid. Purified antibody supplied in 1x PBS buffer with 0.09% (w/v) sodium azide and 2% sucrose. <i>Note that this product is shipped as lyophilized powder to China customers.</i>
Concentration:	lot specific
Purification:	Affinity Purified
Conjugation:	Unconjugated
Storage:	Store at -20°C as received.
Stability:	Stable for 12 months from date of receipt.
Predicted Protein Size:	31 kDa
Gene Name:	sprouty RTK signaling antagonist 3
Database Link:	NP_005831 Entrez Gene 10251 Human O43610
Background:	SPRY3 contains 1 B30.2/SPRY domain. Sprouty/Caveolin-1 interaction modulates signaling in a growth factor- and Sprouty isoform-specific manner. Spry 1, 2 and 3 expression was observed in placental tissue from all three trimesters. The exact function of SPRY3 remains unknown.
Synonyms:	spry-3

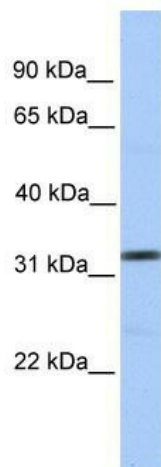


[View online »](#)

Note: Immunogen Sequence Homology: Pig: 100%; Rat: 100%; Horse: 100%; Human: 100%; Mouse: 100%; Bovine: 100%; Rabbit: 100%; Guinea pig: 100%

Protein Pathways: Jak-STAT signaling pathway

Product images:



WB Suggested Anti-SPRY3 Antibody Titration: 0.2-1 ug/ml; Positive Control: Human brain