

## Product datasheet for **TA339688**

### ING1 Rabbit Polyclonal Antibody

#### Product data:

Product Type:	Primary Antibodies
Applications:	WB
Recommended Dilution:	WB
Reactivity:	Human
Host:	Rabbit
Isotype:	IgG
Clonality:	Polyclonal
Immunogen:	The immunogen for anti-ING1 antibody: synthetic peptide directed towards the C terminal of human ING1. Synthetic peptide located within the following region: EKKAKTSKKKKRSKAKAEREASPADLPIDPNEPTYCLCNQVSYGEMIGCD
Formulation:	Liquid. Purified antibody supplied in 1x PBS buffer with 0.09% (w/v) sodium azide and 2% sucrose. <i>Note that this product is shipped as lyophilized powder to China customers.</i>
Concentration:	lot specific
Purification:	Protein A purified
Conjugation:	Unconjugated
Storage:	Store at -20°C as received.
Stability:	Stable for 12 months from date of receipt.
Predicted Protein Size:	32 kDa
Gene Name:	inhibitor of growth family member 1
Database Link:	<a href="#">NP_937862</a> <a href="#">Entrez Gene 3621 Human</a> <a href="#">Q9UK53</a>



[View online »](#)

**Background:**

ING1 is a tumor suppressor protein that can induce cell growth arrest and apoptosis. The protein is a nuclear protein that physically interacts with the tumor suppressor protein TP53 and is a component of the p53 signaling pathway. Reduced expression and rearrangement of ING1 gene have been detected in various cancers. This gene encodes a tumor suppressor protein that can induce cell growth arrest and apoptosis. The encoded protein is a nuclear protein that physically interacts with the tumor suppressor protein TP53 and is a component of the p53 signaling pathway. Reduced expression and rearrangement of this gene have been detected in various cancers. Multiple alternatively spliced transcript variants encoding distinct isoforms have been reported.

**Synonyms:**

p24ING1c; p33; p33ING1; p33ING1b; p47; p47ING1a

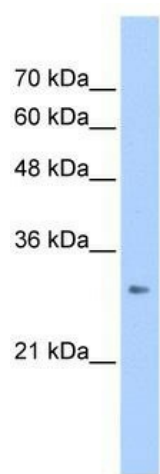
**Note:**

Immunogen Sequence Homology: Dog: 100%; Pig: 100%; Rat: 100%; Human: 100%; Mouse: 100%; Bovine: 100%; Guinea pig: 100%; Horse: 93%; Rabbit: 93%; Zebrafish: 86%

**Protein Families:**

Druggable Genome, Transcription Factors

**Product images:**



WB Suggested Anti-ING1 Antibody Titration: 2.5 ug/ml; Positive Control: HepG2 cell lysate  
There is BioGPS gene expression data showing that ING1 is expressed in HepG2