

## Product datasheet for **TA339687**

### ING1 Rabbit Polyclonal Antibody

#### Product data:

Product Type:	Primary Antibodies
Applications:	WB
Recommended Dilution:	WB
Reactivity:	Human
Host:	Rabbit
Isotype:	IgG
Clonality:	Polyclonal
Immunogen:	The immunogen for anti-ING1 antibody: synthetic peptide directed towards the N terminal of human ING1. Synthetic peptide located within the following region: SPAERLVAEADGGPSAITGMGLCFRCLLFSFSGRSGVEGGRVDLNVFGS
Formulation:	Liquid. Purified antibody supplied in 1x PBS buffer with 0.09% (w/v) sodium azide and 2% sucrose. <i>Note that this product is shipped as lyophilized powder to China customers.</i>
Concentration:	lot specific
Purification:	Affinity Purified
Conjugation:	Unconjugated
Storage:	Store at -20°C as received.
Stability:	Stable for 12 months from date of receipt.
Predicted Protein Size:	47 kDa
Gene Name:	inhibitor of growth family member 1
Database Link:	<a href="#">NP_005528</a> <a href="#">Entrez Gene 3621 Human</a> <a href="#">Q9UK53</a>
Background:	ING1 is a tumor suppressor protein that can induce cell growth arrest and apoptosis. The protein is a nuclear protein that physically interacts with the tumor suppressor protein TP53 and is a component of the p53 signaling pathway. Reduced expression and rearrangement of ING1 gene have been detected in various cancers.
Synonyms:	p24ING1c; p33; p33ING1; p33ING1b; p47; p47ING1a

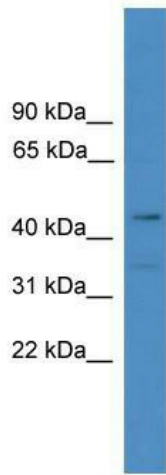


[View online »](#)

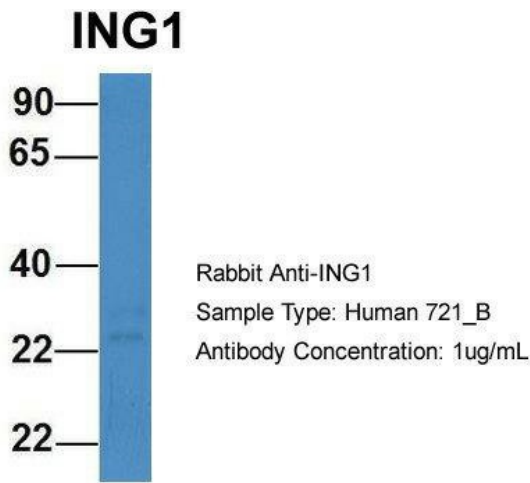
**Note:** Immunogen Sequence Homology: Human: 100%

**Protein Families:** Druggable Genome, Transcription Factors

**Product images:**



WB Suggested Anti-ING1 Antibody Titration: 0.2-1 ug/ml; ELISA Titer: 1: 312500; Positive Control: Hela cell lysate. ING1 is strongly supported by BioGPS gene expression data to be expressed in HeLa



Host: Rabbit; Target Name: ING1; Sample Tissue: Human 721\_B; Antibody Dilution: 1.0 ug/ml ING1 is strongly supported by BioGPS gene expression data to be expressed in Human 721\_B cells