

Product datasheet for **TA339686**

HMX2 Rabbit Polyclonal Antibody

Product data:

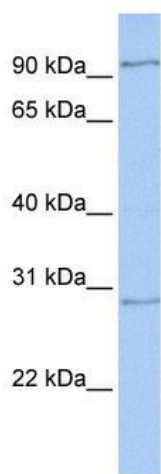
Product Type:	Primary Antibodies
Applications:	WB
Recommended Dilution:	WB
Reactivity:	Human
Host:	Rabbit
Isotype:	IgG
Clonality:	Polyclonal
Immunogen:	The immunogen for anti-HMX2 antibody: synthetic peptide directed towards the middle region of human HMX2. Synthetic peptide located within the following region: SPSHSDFKEEKERLLPAGSPSPGSEPRDGGGAERQAGAAKKKTRTVFSRS
Formulation:	Liquid. Purified antibody supplied in 1x PBS buffer with 0.09% (w/v) sodium azide and 2% sucrose. <i>Note that this product is shipped as lyophilized powder to China customers.</i>
Concentration:	lot specific
Purification:	Affinity Purified
Conjugation:	Unconjugated
Storage:	Store at -20°C as received.
Stability:	Stable for 12 months from date of receipt.
Predicted Protein Size:	29 kDa
Gene Name:	H6 family homeobox 2
Database Link:	NP_005510 Entrez Gene 3167 Human A2RU54
Background:	HMX2 belongs to the HMX homeobox family. It contains 1 homeobox DNA-binding domain. HMX2 is a transcription factor involved in specification of neuronal cell types and which is required for inner ear and hypothalamus development.
Synonyms:	H6L; Nkx5-2



[View online »](#)

Note: Immunogen Sequence Homology: Dog: 100%; Pig: 100%; Rat: 100%; Horse: 100%; Human: 100%; Mouse: 100%; Rabbit: 100%; Bovine: 93%; Guinea pig: 93%

Product images:



WB Suggested Anti-HMX2 Antibody Titration: 0.2-1 ug/ml; Positive Control: Human brain