

Product datasheet for **TA339684**

AIM2 Rabbit Polyclonal Antibody

Product data:

Product Type:	Primary Antibodies
Applications:	WB
Recommended Dilution:	WB
Reactivity:	Human
Host:	Rabbit
Isotype:	IgG
Clonality:	Polyclonal
Immunogen:	The immunogen for anti-AIM2 antibody: synthetic peptide directed towards the N terminal of human AIM2. Synthetic peptide located within the following region: ESKYEILLLTGLDNITDEELDRFKFFLSDEFNIATGKLHTANRIQVATL
Formulation:	Liquid. Purified antibody supplied in 1x PBS buffer with 0.09% (w/v) sodium azide and 2% sucrose. <i>Note that this product is shipped as lyophilized powder to China customers.</i>
Concentration:	lot specific
Purification:	Affinity Purified
Conjugation:	Unconjugated
Storage:	Store at -20°C as received.
Stability:	Stable for 12 months from date of receipt.
Predicted Protein Size:	39 kDa
Gene Name:	absent in melanoma 2
Database Link:	NP_004824 Entrez Gene 9447 Human O14862
Background:	AIM2 is a member of the IFI20X /IFI16 family. It plays a putative role in tumorigenic reversion and may control cell proliferation. Interferon-gamma induces expression of AIM2. AIM2 is a member of the IFI20X /IFI16 family. It plays a putative role in tumorigenic reversion and may control cell proliferation. Interferon-gamma induces expression of AIM2.
Synonyms:	PYHIN4

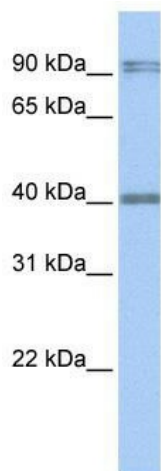


[View online »](#)

Note: Immunogen Sequence Homology: Horse: 100%; Human: 100%; Zebrafish: 100%; Rat: 79%;
Mouse: 79%

Protein Pathways: Cytosolic DNA-sensing pathway

Product images:



WB Suggested Anti-AIM2 Antibody Titration: 0.2-1 ug/ml; Positive Control: Human Lung