

Product datasheet for TA339681

FHL3 Rabbit Polyclonal Antibody

Product data:

Product Type:	Primary Antibodies
Applications:	WB
Recommended Dilution:	WB
Reactivity:	Human
Host:	Rabbit
Isotype:	IgG
Clonality:	Polyclonal
Immunogen:	The immunogen for anti-FHL3 antibody: synthetic peptide directed towards the middle region of human FHL3. Synthetic peptide located within the following region: HRECLVCTGCQTPLAGQQFTSRDEDPYCVACFGELFAPKCSSCKRPIVGL
Formulation:	Liquid. Purified antibody supplied in 1x PBS buffer with 0.09% (w/v) sodium azide and 2% sucrose. <i>Note that this product is shipped as lyophilized powder to China customers.</i>
Concentration:	lot specific
Purification:	Affinity Purified
Conjugation:	Unconjugated
Storage:	Store at -20°C as received.
Stability:	Stable for 12 months from date of receipt.
Predicted Protein Size:	31 kDa
Gene Name:	four and a half LIM domains 3
Database Link:	NP_004459 Entrez Gene 2275 Human Q13643



[View online »](#)

Background:

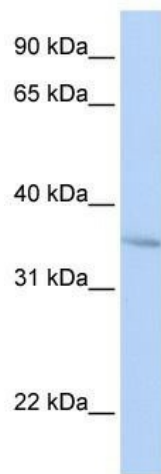
FHL3 contains 4 LIM zinc-binding domains. It is expressed only in skeletal muscle. FHL3 association with MyoD may contribute to the regulation of MyoD-dependent transcription of muscle genes and thereby myogenesis. LIM proteins are defined by the possession of a highly conserved double zinc finger motif called the LIM domain. [supplied by OMIM]. Publication Note: This RefSeq record includes a subset of the publications that are available for this gene. Please see the Entrez Gene record to access additional publications.

Synonyms:

SLIM2

Note:

Immunogen Sequence Homology: Human: 100%; Dog: 93%; Pig: 93%; Rat: 93%; Horse: 93%; Rabbit: 93%; Mouse: 92%; Bovine: 86%; Guinea pig: 86%; Zebrafish: 82%

Product images:

WB Suggested Anti-FHL3 Antibody Titration: 0.2-1 ug/ml; Positive Control: HepG2 cell lysate