

Product datasheet for **TA339679**

EIF3S3 (EIF3H) Rabbit Polyclonal Antibody

Product data:

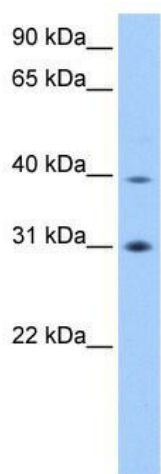
Product Type:	Primary Antibodies
Applications:	WB
Recommended Dilution:	WB
Reactivity:	Human
Host:	Rabbit
Isotype:	IgG
Clonality:	Polyclonal
Immunogen:	The immunogen for anti-EIF3H antibody: synthetic peptide directed towards the C terminal of human EIF3H. Synthetic peptide located within the following region: LMDRVDEMSQDIVKYNTYMRNTSKQQQKHQYQRRQENMQRQSRGPEP
Formulation:	Liquid. Purified antibody supplied in 1x PBS buffer with 0.09% (w/v) sodium azide and 2% sucrose. <i>Note that this product is shipped as lyophilized powder to China customers.</i>
Concentration:	lot specific
Purification:	Affinity Purified
Conjugation:	Unconjugated
Storage:	Store at -20°C as received.
Stability:	Stable for 12 months from date of receipt.
Predicted Protein Size:	40 kDa
Gene Name:	eukaryotic translation initiation factor 3 subunit H
Database Link:	NP_003747 Entrez Gene 8667 Human O15372
Background:	EIF3H belongs to the peptidase M67 family. It contains 1 MPN (JAB/Mov34) domain. EIF3H binds to the 40S ribosome and promotes the binding of methionyl-tRNA ⁱ and mRNA. It associates with the p170 subunit of EIF3.
Synonyms:	eIF3-gamma; eIF3-p40; EIF3S3



[View online »](#)

Note: Immunogen Sequence Homology: Dog: 100%; Pig: 100%; Rat: 100%; Horse: 100%; Human: 100%; Mouse: 100%; Bovine: 100%; Rabbit: 100%; Guinea pig: 100%; Zebrafish: 93%; Yeast: 75%

Product images:



WB Suggested Anti-EIF3H Antibody Titration: 0.2-1 ug/ml; Positive Control: Human brain