

Product datasheet for **TA339678**

EIF3S3 (EIF3H) Rabbit Polyclonal Antibody

Product data:

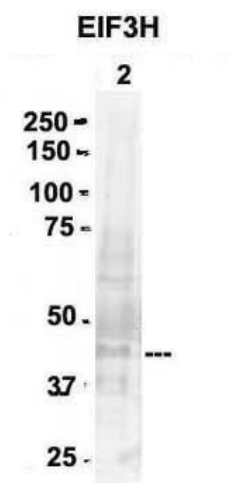
Product Type:	Primary Antibodies
Applications:	IHC, WB
Recommended Dilution:	WB, IHC
Reactivity:	Human, Mouse
Host:	Rabbit
Isotype:	IgG
Clonality:	Polyclonal
Immunogen:	The immunogen for anti-EIF3H antibody: synthetic peptide directed towards the N terminal of human EIF3H. Synthetic peptide located within the following region: MASRKEGTGSTATSSSSTAGAAGKKGKGGSGDSAVKQVQIDGLVVKII
Formulation:	Liquid. Purified antibody supplied in 1x PBS buffer with 0.09% (w/v) sodium azide and 2% sucrose. <i>Note that this product is shipped as lyophilized powder to China customers.</i>
Concentration:	lot specific
Purification:	Affinity Purified
Conjugation:	Unconjugated
Storage:	Store at -20°C as received.
Stability:	Stable for 12 months from date of receipt.
Predicted Protein Size:	40 kDa
Gene Name:	eukaryotic translation initiation factor 3 subunit H
Database Link:	NP_003747 Entrez Gene 68135 Mouse Entrez Gene 8667 Human O15372
Background:	EIF3H belongs to the peptidase M67 family. It contains 1 MPN (JAB/Mov34) domain. EIF3H binds to the 40S ribosome and promotes the binding of methionyl-tRNA ⁱ and mRNA. It associates with the p170 subunit of EIF3.
Synonyms:	eIF3-gamma; eIF3-p40; EIF3S3



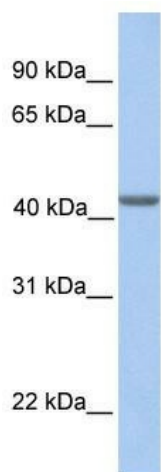
[View online »](#)

Note: Immunogen Sequence Homology: Rat: 100%; Human: 100%; Mouse: 100%; Pig: 93%; Bovine: 93%; Dog: 86%; Horse: 86%; Rabbit: 86%; Guinea pig: 86%

Product images:

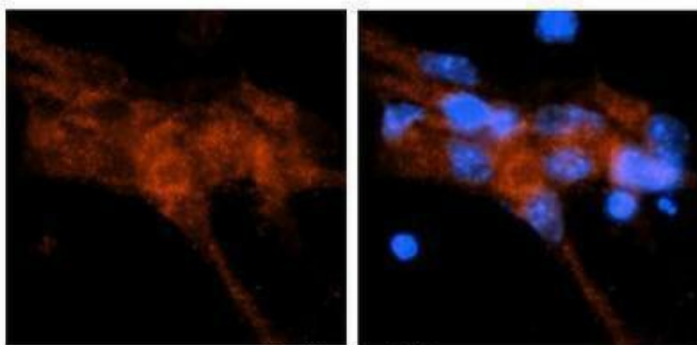


Sample Type: mouse brain extracts (80 ug);
 Primary Antibody Dilution: 2 ug/ml; Secondary
 Antibody: IRDye 800CW goat anti-rabbit from Li-
 COR Bioscience; Secondary Antibody Dilution:
 1:20,000; Image Submitted by: Yuzhi Chen;
 University of Arkansas for



WB Suggested Anti-EIF3H Antibody Titration: 0.2-
 1 ug/ml; Positive Control: Human Muscle

EIF3H



Antibody--RED
DAPI--Blue

Researcher: Dr. Yuzhi Chen, University of Arkansas for Medical Science; Application: IHC; Species+tissue/cell type: Mouse brain stem cells; Primary antibody dilution: 1: 500; Secondary antibody: Goat anti-rabbit Alexa-Fluor 594; Secondary antibody dilution