

Product datasheet for **TA339677**

ING2 Rabbit Polyclonal Antibody

Product data:

Product Type:	Primary Antibodies
Applications:	WB
Recommended Dilution:	WB
Reactivity:	Human
Host:	Rabbit
Isotype:	IgG
Clonality:	Polyclonal
Immunogen:	The immunogen for anti-ING2 antibody: synthetic peptide directed towards the N terminal of human ING2. Synthetic peptide located within the following region: TCYVQDYLECVESLPHDMQRNVSVLRELDNKYQETLKEIDDVYEKYKED
Formulation:	Liquid. Purified antibody supplied in 1x PBS buffer with 0.09% (w/v) sodium azide and 2% sucrose. <i>Note that this product is shipped as lyophilized powder to China customers.</i>
Concentration:	lot specific
Purification:	Affinity Purified
Conjugation:	Unconjugated
Storage:	Store at -20°C as received.
Stability:	Stable for 12 months from date of receipt.
Predicted Protein Size:	33 kDa
Gene Name:	inhibitor of growth family member 2
Database Link:	NP_001555 Entrez Gene 3622 Human Q9H160
Background:	This gene is a member of the inhibitor of growth (ING) family. Members of the ING family associate with and modulate the activity of histone acetyltransferase (HAT) and histone deacetylase (HDAC) complexes and function in DNA repair and apoptosis.
Synonyms:	ING1L; p33ING2

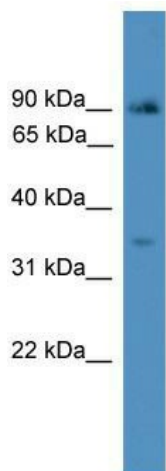


[View online »](#)

Note: Immunogen Sequence Homology: Dog: 100%; Pig: 100%; Rat: 100%; Horse: 100%; Human: 100%; Mouse: 100%; Bovine: 100%; Rabbit: 100%; Guinea pig: 100%; Zebrafish: 79%

Protein Families: Druggable Genome, Transcription Factors

Product images:



WB Suggested Anti-ING2 Antibody Titration: 0.2-1 ug/ml; ELISA Titer: 1: 312500; Positive Control: COLO205 cell lysate ING2 is strongly supported by BioGPS gene expression data to be expressed in Human COLO205 cells