

## Product datasheet for **TA339675**

### ZNF862 Rabbit Polyclonal Antibody

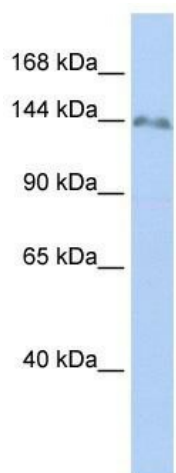
#### Product data:

Product Type:	Primary Antibodies
Applications:	WB
Recommended Dilution:	WB
Reactivity:	Human
Host:	Rabbit
Isotype:	IgG
Clonality:	Polyclonal
Immunogen:	The immunogen for anti-ZNF862 antibody: synthetic peptide directed towards the N terminal of human LOC643641. Synthetic peptide located within the following region: EPRESGKAPVTFDDITVYLLQEEWVLLSQQKELCGSNKLVAPLGPTVAN
Formulation:	Liquid. Purified antibody supplied in 1x PBS buffer with 0.09% (w/v) sodium azide and 2% sucrose. <i>Note that this product is shipped as lyophilized powder to China customers.</i>
Concentration:	lot specific
Purification:	Affinity Purified
Conjugation:	Unconjugated
Storage:	Store at -20°C as received.
Stability:	Stable for 12 months from date of receipt.
Predicted Protein Size:	132 kDa
Gene Name:	zinc finger protein 862
Database Link:	<a href="#">NP_001092690</a> <a href="#">Entrez Gene 643641 Human</a> <a href="#">O60290</a>
Background:	The exact function of LOC643641 remains unknown.
Synonyms:	FLJ30362; KIAA0543
Note:	Immunogen Sequence Homology: Dog: 100%; Pig: 100%; Rat: 100%; Human: 100%; Bovine: 100%; Rabbit: 100%; Guinea pig: 100%



[View online »](#)

Product images:



WB Suggested Anti-ZNF862 Antibody Titration:  
0.2-1 ug/ml; Positive Control: 721\_B cell lysate