

## Product datasheet for **TA339674**

### GTF2H2 Rabbit Polyclonal Antibody

#### Product data:

Product Type:	Primary Antibodies
Applications:	WB
Recommended Dilution:	WB
Reactivity:	Mouse
Host:	Rabbit
Isotype:	IgG
Clonality:	Polyclonal
Immunogen:	The immunogen for Anti-Gtf2h2 antibody is: synthetic peptide directed towards the N-terminal region of MOUSE Gtf2h2. Synthetic peptide located within the following region: SLKATIEDILFKAKRKRVEHHGQVRLGMMRHLVYVVDGSRMEDQDLKP
Formulation:	Liquid. Purified antibody supplied in 1x PBS buffer with 0.09% (w/v) sodium azide and 2% sucrose. <i>Note that this product is shipped as lyophilized powder to China customers.</i>
Concentration:	lot specific
Purification:	Affinity Purified
Conjugation:	Unconjugated
Storage:	Store at -20°C as received.
Stability:	Stable for 12 months from date of receipt.
Predicted Protein Size:	22 kDa
Gene Name:	general transcription factor IIH subunit 2
Database Link:	<a href="#">NP_001506</a> <a href="#">Entrez Gene 23894 Mouse Q13888</a>
Background:	The function of this protein remains unknown.
Synonyms:	BTF2; BTF2P44; p44; T-BTF2P44; TFIIH
Note:	Immunogen Sequence Homology: Dog: 100%; Pig: 100%; Rat: 100%; Horse: 100%; Human: 100%; Mouse: 100%; Bovine: 100%; Rabbit: 100%; Guinea pig: 100%; Zebrafish: 92%

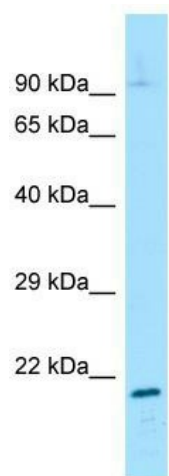


[View online »](#)

**Protein Families:** Druggable Genome, Stem cell - Pluripotency, Transcription Factors

**Protein Pathways:** Basal transcription factors, Nucleotide excision repair

**Product images:**



Host: Rabbit; Target Name: Gtf2h2; Sample  
Tissue: Mouse Muscle lysates; Antibody Dilution:  
1.0 ug/ml