

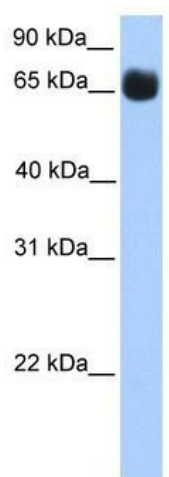
Product datasheet for **TA339670**

ZNF433 Rabbit Polyclonal Antibody

Product data:

| | |
|-------------------------|---|
| Product Type: | Primary Antibodies |
| Applications: | WB |
| Recommended Dilution: | WB |
| Reactivity: | Human |
| Host: | Rabbit |
| Isotype: | IgG |
| Clonality: | Polyclonal |
| Immunogen: | The immunogen for anti-ZNF433 antibody: synthetic peptide directed towards the N terminal of human ZNF433. Synthetic peptide located within the following region: GEVGSAHSSLNRHIRDDTGHKAYEYQEYGQPKPYCKYCKKPFNCLSSVQT |
| Formulation: | Liquid. Purified antibody supplied in 1x PBS buffer with 0.09% (w/v) sodium azide and 2% sucrose. |
| Concentration: | lot specific |
| Purification: | Affinity Purified |
| Conjugation: | Unconjugated |
| Storage: | Store at -20°C as received. |
| Stability: | Stable for 12 months from date of receipt. |
| Predicted Protein Size: | 77 kDa |
| Gene Name: | zinc finger protein 433 |
| Database Link: | NP_001073880 Entrez Gene 163059 Human Q8N7K0 |
| Background: | ZNF433 belongs to the krueppel C2H2-type zinc-finger protein family. It contains 19 C2H2-type zinc fingers and 1 KRAB domain. ZNF433 may be involved in transcriptional regulation. |
| Synonyms: | FLJ40981 |
| Note: | Immunogen Sequence Homology: Human: 100%; Dog: 90%; Pig: 82%; Horse: 82% |
| Protein Families: | Transcription Factors |


[View online »](#)

Product images:


WB Suggested Anti-ZNF433 Antibody Titration:
0.2-1 ug/ml; Positive Control: Human Muscle