

## Product datasheet for **TA339669**

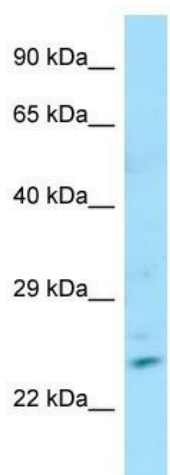
### ZNF846 Rabbit Polyclonal Antibody

#### Product data:

Product Type:	Primary Antibodies
Applications:	WB
Recommended Dilution:	WB
Reactivity:	Human
Host:	Rabbit
Isotype:	IgG
Clonality:	Polyclonal
Immunogen:	The immunogen for Anti-ZNF846 antibody is: synthetic peptide directed towards the N-terminal region of Human ZNF846. Synthetic peptide located within the following region: HIGEKTSEDNQSGKALRKNFPHSFYKKSHAEGKMPKCVKHEKAFNQFPNL
Formulation:	Liquid. Purified antibody supplied in 1x PBS buffer with 0.09% (w/v) sodium azide and 2% sucrose. <i>Note that this product is shipped as lyophilized powder to China customers.</i>
Concentration:	lot specific
Purification:	Affinity Purified
Conjugation:	Unconjugated
Storage:	Store at -20°C as received.
Stability:	Stable for 12 months from date of receipt.
Predicted Protein Size:	23 kDa
Gene Name:	zinc finger protein 846
Database Link:	<a href="#">NP_001071092</a> <a href="#">Entrez Gene 162993 Human</a> <a href="#">Q147U1</a>
Background:	ZNF846 may be involved in transcriptional regulation.
Synonyms:	zinc finger protein 846
Note:	Immunogen Sequence Homology: Human: 100%



[View online »](#)

**Product images:**

Host: Rabbit

Target Name: ZNF846

Sample Tissue: Fetal Small Intestine Lysate

Antibody Dilution: 1.0 $\mu$ g/ml

Host: Rabbit; Target Name: ZNF846; Sample Tissue: Fetal Small Intestine lysates; Antibody Dilution: 1.0 ug/ml