

Product datasheet for **TA339668**

ZFYVE19 Rabbit Polyclonal Antibody

Product data:

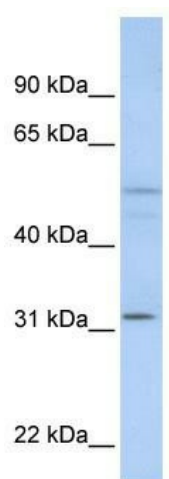
Product Type:	Primary Antibodies
Applications:	WB
Recommended Dilution:	WB
Reactivity:	Human
Host:	Rabbit
Isotype:	IgG
Clonality:	Polyclonal
Immunogen:	The immunogen for anti-ZFYVE19 antibody: synthetic peptide directed towards the C terminal of human ZFYVE19. Synthetic peptide located within the following region: CNEDATLRCAGCDGDLFCARCFREGHDAFELKEHQTSAYSPPRAGQEH
Formulation:	Liquid. Purified antibody supplied in 1x PBS buffer with 0.09% (w/v) sodium azide and 2% sucrose. <i>Note that this product is shipped as lyophilized powder to China customers.</i>
Concentration:	lot specific
Purification:	Affinity Purified
Conjugation:	Unconjugated
Storage:	Store at -20°C as received.
Stability:	Stable for 12 months from date of receipt.
Predicted Protein Size:	51 kDa
Gene Name:	zinc finger FYVE-type containing 19
Database Link:	NP_001070736 Entrez Gene 84936 Human Q96K21
Background:	ZFYVE19 contains 1 FYVE-type zinc finger. A chromosomal aberration, translocation t(11;15) (q23;q14) with MLL/HRX, involving ZFYVE19 is associated with acute myeloblastic leukemia (AML).
Synonyms:	ANCHR; MPFYVE



[View online »](#)

Note: Immunogen Sequence Homology: Human: 100%; Dog: 86%; Pig: 79%; Guinea pig: 79%

Product images:



WB Suggested Anti-ZFYVE19 Antibody Titration:
0.2-1 ug/ml; ELISA Titer: 1: 1562500; Positive
Control: MCF7 cell lysate