

Product datasheet for **TA339667**

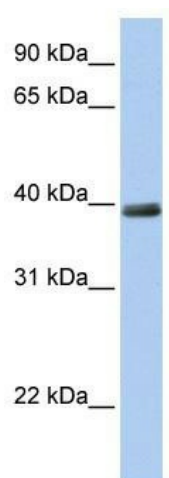
ZNF391 Rabbit Polyclonal Antibody

Product data:

Product Type:	Primary Antibodies
Applications:	WB
Recommended Dilution:	WB
Reactivity:	Human
Host:	Rabbit
Isotype:	IgG
Clonality:	Polyclonal
Immunogen:	The immunogen for anti-ZNF391 antibody: synthetic peptide directed towards the N terminal of human ZNF391. Synthetic peptide located within the following region: QQKIPKGGHSGPISRKNSKDNSDLIKHQRLFSQRKPKCKNECEKAFSYQSD
Formulation:	Liquid. Purified antibody supplied in 1x PBS buffer with 0.09% (w/v) sodium azide and 2% sucrose. <i>Note that this product is shipped as lyophilized powder to China customers.</i>
Concentration:	lot specific
Purification:	Affinity Purified
Conjugation:	Unconjugated
Storage:	Store at -20°C as received.
Stability:	Stable for 12 months from date of receipt.
Predicted Protein Size:	41 kDa
Gene Name:	zinc finger protein 391
Database Link:	NP_001070249 Entrez Gene 346157 Human Q9UJN7
Background:	ZNF391 belongs to the krueppel C2H2-type zinc-finger protein family. It contains 9 C2H2-type zinc fingers. ZNF391 may be involved in transcriptional regulation.
Synonyms:	dj153G14.3
Note:	Immunogen Sequence Homology: Human: 100%; Dog: 91%; Bovine: 91%



[View online »](#)

Product images:

WB Suggested Anti-ZNF391 Antibody Titration:
0.2-1 ug/ml; Positive Control: 721_B cell lysate
ZNF391 is supported by BioGPS gene expression
data to be expressed in 721_B