

Product datasheet for **TA339665**

ZXDC Rabbit Polyclonal Antibody

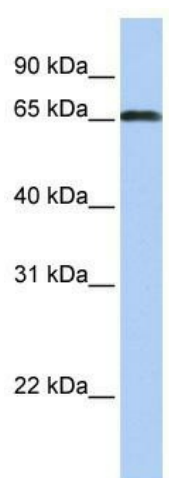
Product data:

Product Type:	Primary Antibodies
Applications:	WB
Recommended Dilution:	WB
Reactivity:	Human
Host:	Rabbit
Isotype:	IgG
Clonality:	Polyclonal
Immunogen:	The immunogen for anti-ZXDC antibody: synthetic peptide directed towards the middle region of human ZXDC. Synthetic peptide located within the following region: NLKAHMKGHEQESLFKCEVCAERFP THAKLSSHQRSHFEPERPYKCDFPG
Formulation:	Liquid. Purified antibody supplied in 1x PBS buffer with 0.09% (w/v) sodium azide and 2% sucrose.
Concentration:	lot specific
Purification:	Affinity Purified
Conjugation:	Unconjugated
Storage:	Store at -20°C as received.
Stability:	Stable for 12 months from date of receipt.
Predicted Protein Size:	75 kDa
Gene Name:	ZXD family zinc finger C
Database Link:	NP_001035743 Entrez Gene 79364 Human Q2QGD7
Background:	ZXDC belongs to the ZXD family. It contains 10 C2H2-type zinc fingers. ZXDC cooperates with CIITA to promote transcription of MHC class I and MHC class II genes.
Synonyms:	ZXDL
Note:	Immunogen Sequence Homology: Dog: 100%; Pig: 100%; Rat: 100%; Horse: 100%; Human: 100%; Mouse: 100%; Bovine: 100%; Rabbit: 100%; Guinea pig: 100%; Zebrafish: 85%



[View online »](#)

Product images:



WB Suggested Anti-ZXDC Antibody Titration: 0.2-1 ug/ml; Positive Control: NTERA2 cell lysate