

Product datasheet for **TA339658**

ZNF630 Rabbit Polyclonal Antibody

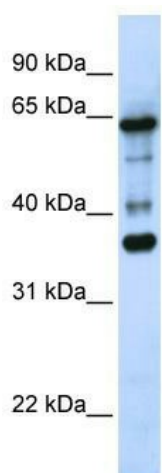
Product data:

Product Type:	Primary Antibodies
Applications:	WB
Recommended Dilution:	WB
Reactivity:	Human
Host:	Rabbit
Isotype:	IgG
Clonality:	Polyclonal
Immunogen:	The immunogen for anti-ZNF630 antibody: synthetic peptide directed towards the N terminal of human ZNF630. Synthetic peptide located within the following region: SCSVPEKEGFIHTGMEPYGDSQCEKVLSHKQAHVQYKKFQAREKPNVCSM
Formulation:	Liquid. Purified antibody supplied in 1x PBS buffer with 0.09% (w/v) sodium azide and 2% sucrose. <i>Note that this product is shipped as lyophilized powder to China customers.</i>
Concentration:	lot specific
Purification:	Affinity Purified
Conjugation:	Unconjugated
Storage:	Store at -20°C as received.
Stability:	Stable for 12 months from date of receipt.
Predicted Protein Size:	61 kDa
Gene Name:	zinc finger protein 630
Database Link:	NP_001032824 Entrez Gene 57232 Human Q2M218
Background:	ZNF630 belongs to the krueppel C2H2-type zinc-finger protein family and may be involved in transcriptional regulation.
Synonyms:	dj54B20.2
Note:	Immunogen Sequence Homology: Human: 100%; Pig: 79%



[View online »](#)

Product images:



WB Suggested Anti-ZNF630 Antibody Titration:
0.2-1 ug/ml; ELISA Titer: 1: 312500; Positive
Control: 293T cell lysate