

Product datasheet for TA339654

PHF12 Rabbit Polyclonal Antibody

Product data:

Product Type:	Primary Antibodies
Applications:	WB
Recommended Dilution:	WB
Reactivity:	Human
Host:	Rabbit
Isotype:	IgG
Clonality:	Polyclonal
Immunogen:	The immunogen for anti-PHF12 antibody: synthetic peptide directed towards the C terminal of human PHF12. Synthetic peptide located within the following region: NVLVYSCDFSEKTPPTPPSSIVAKVQSVIRRRRHQKQDEEPSEEAAAMMSSQ
Formulation:	Liquid. Purified antibody supplied in 1x PBS buffer with 0.09% (w/v) sodium azide and 2% sucrose. <i>Note that this product is shipped as lyophilized powder to China customers.</i>
Concentration:	lot specific
Purification:	Affinity Purified
Conjugation:	Unconjugated
Storage:	Store at -20°C as received.
Stability:	Stable for 12 months from date of receipt.
Predicted Protein Size:	110 kDa
Gene Name:	PHD finger protein 12
Database Link:	NP_001028733 Entrez Gene 57649 Human Q96QT6
Background:	PHF12 acts as a transcriptional repressor. It is involved in recruitment of functional SIN3A complexes to DNA. PHF12 represses transcription at least in part through the activity of an associated histone deacetylase (HDAC). IT may also repress transcription in a SIN3A-independent manner through recruitment of functional AES complexes to DNA.
Synonyms:	PF1

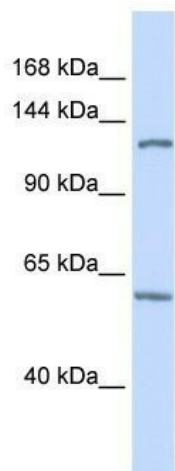


[View online »](#)

Note: Immunogen Sequence Homology: Pig: 100%; Rat: 100%; Horse: 100%; Human: 100%; Mouse: 100%; Bovine: 100%; Rabbit: 100%; Guinea pig: 100%

Protein Families: Druggable Genome, Transcription Factors

Product images:



WB Suggested Anti-PHF12 Antibody Titration: 0.2-1 ug/ml; ELISA Titer: 1: 312500; Positive Control: Human brain