

Product datasheet for **TA339653**

ZNF226 Rabbit Polyclonal Antibody

Product data:

Product Type:	Primary Antibodies
Applications:	WB
Recommended Dilution:	WB
Reactivity:	Human
Host:	Rabbit
Isotype:	IgG
Clonality:	Polyclonal
Immunogen:	The immunogen for anti-ZNF226 antibody: synthetic peptide directed towards the middle region of human ZNF226. Synthetic peptide located within the following region: ACGKSFSRNSHLQSHQRVHTGEKPYKCEECGKGFICSSNLYIHQRVHTGE
Formulation:	Liquid. Purified antibody supplied in 1x PBS buffer with 0.09% (w/v) sodium azide and 2% sucrose. <i>Note that this product is shipped as lyophilized powder to China customers.</i>
Concentration:	lot specific
Purification:	Affinity Purified
Conjugation:	Unconjugated
Storage:	Store at -20°C as received.
Stability:	Stable for 12 months from date of receipt.
Predicted Protein Size:	92 kDa
Gene Name:	zinc finger protein 226
Database Link:	NP_001027544 Entrez Gene 7769 Human Q9NYT6
Background:	ZNF226 belongs to the krueppel C2H2-type zinc-finger protein family. It contains 19 C2H2-type zinc fingers and 1 KRAB domain. ZNF226 may be involved in transcriptional regulation.
Synonyms:	Kruppel-associated box protein; zinc finger protein 226

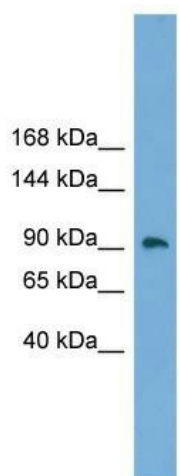


[View online »](#)

Note: Immunogen Sequence Homology: Dog: 100%; Pig: 100%; Rat: 100%; Horse: 100%; Human: 100%; Mouse: 100%; Bovine: 100%; Rabbit: 93%; Guinea pig: 93%

Protein Families: Transcription Factors

Product images:



WB Suggested Anti-ZNF226 Antibody Titration:
0.2-1 ug/ml; ELISA Titer: 1: 312500; Positive
Control: Human Placenta