

## Product datasheet for **TA339650**

### HELT Rabbit Polyclonal Antibody

#### Product data:

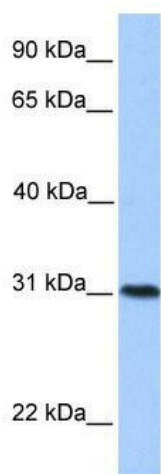
Product Type:	Primary Antibodies
Applications:	WB
Recommended Dilution:	WB
Reactivity:	Human
Host:	Rabbit
Isotype:	IgG
Clonality:	Polyclonal
Immunogen:	The immunogen for anti-HELT antibody: synthetic peptide directed towards the middle region of human HELT. Synthetic peptide located within the following region: EMTVQYLRALHSADFPRGREKAELLAEFANYFHGYHECMKNLVHYLTTV
Formulation:	Liquid. Purified antibody supplied in 1x PBS buffer with 0.09% (w/v) sodium azide and 2% sucrose. <i>Note that this product is shipped as lyophilized powder to China customers.</i>
Concentration:	lot specific
Purification:	Affinity Purified
Conjugation:	Unconjugated
Storage:	Store at -20°C as received.
Stability:	Stable for 12 months from date of receipt.
Predicted Protein Size:	36 kDa
Gene Name:	helt bHLH transcription factor
Database Link:	<a href="#">NP_001025058</a> <a href="#">Entrez Gene 391723 Human</a> <a href="#">A6NFD8</a>
Background:	HELT belongs to the HEY family. It contains 1 basic helix-loop-helix (bHLH) domain and 1 orange domain. HELT is a transcriptional repressor which binds preferentially to the canonical E box sequence 5'-CACGCG-3'.
Synonyms:	bHLHb44; HCM1228; HESL; Mgn



[View online »](#)

**Note:** Immunogen Sequence Homology: Pig: 100%; Rat: 100%; Horse: 100%; Human: 100%; Mouse: 100%; Bovine: 100%; Rabbit: 100%; Zebrafish: 100%; Guinea pig: 100%; Dog: 93%

**Product images:**



WB Suggested Anti-HELT Antibody Titration: 0.2-1 ug/ml; Positive Control: MCF7 cell lysate