

Product datasheet for **TA339649**

SFMBT1 Rabbit Polyclonal Antibody

Product data:

Product Type:	Primary Antibodies
Applications:	WB
Recommended Dilution:	WB
Reactivity:	Human
Host:	Rabbit
Isotype:	IgG
Clonality:	Polyclonal
Immunogen:	The immunogen for Anti-SFMBT1 antibody is: synthetic peptide directed towards the middle region of Human SFMBT1. Synthetic peptide located within the following region: PGNCVLVLRVLLLLINAAYKPSRVLRQLDKDSVWHGCGEVLKAKYKG
Formulation:	Liquid. Purified antibody supplied in 1x PBS buffer with 0.09% (w/v) sodium azide and 2% sucrose. <i>Note that this product is shipped as lyophilized powder to China customers.</i>
Concentration:	lot specific
Purification:	Affinity Purified
Conjugation:	Unconjugated
Storage:	Store at -20°C as received.
Stability:	Stable for 12 months from date of receipt.
Predicted Protein Size:	90 kDa
Gene Name:	Scm-like with four mbt domains 1
Database Link:	NP_057413 Entrez Gene 51460 Human Q9UHJ3
Background:	This gene shares high similarity with the Drosophila Scm (sex comb on midleg) gene. It encodes a protein which contains four malignant brain tumor repeat (mbt) domains and may be involved in antigen recognition.
Synonyms:	hSFMBT; RU1; SFMBT

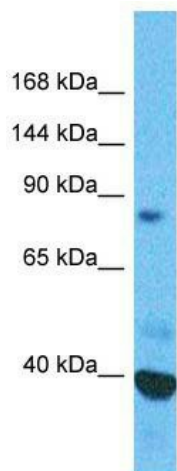


[View online »](#)

Note: Immunogen Sequence Homology: Dog: 100%; Pig: 100%; Rat: 100%; Horse: 100%; Human: 100%; Mouse: 100%; Bovine: 100%; Rabbit: 100%; Guinea pig: 100%; Zebrafish: 93%

Protein Families: Transcription Factors

Product images:



Host: Rabbit; Target Name: SFMBT1; Sample Tissue: Esophagus tumor lysates; Antibody Dilution: 1.0 ug/ml